

W&H PEACOCK  
AUCTIONEERS & VALUERS

# Mid Century Design

Bedford Auction Centre  
Friday 21st November | Commencing at 10.30am

Viewing: Friday 14th November 9am to 8pm  
Saturday 15th November 9am to 5pm  
Thursday 20th November 9am to 5pm  
and morning of Sale from 9am  
[www.peacockauction.co.uk](http://www.peacockauction.co.uk)



1 A Meredew teak and maple finished chest of eight drawers on a later metalwork stand, 131 x 46 x 87 cm

**Est £50 - £80**

2 A Ligne Roset 'Togo' corner seat upholstered in purple button fabric, labelled to the base

**Est £300 - £500**

3 A Younger Ltd. teak sideboard, the four central drawers flanked by two pairs on doors, on triangular form legs, labelled to the interior, 198 x 46 x 75 cm

**Est £200 - £300**



4 A Danish brown leather upholstered two seater sofa with a beech frame by Stouby, w. 149 cm \*SFP

**Est £80 - £120**

5 A 1960/70's tile-topped coffee table by Advi, Belgium, on a chromed frame, 108 x 46 cm

**Est £100 - £200**

6 A Danish brown leather upholstered three seater sofa with a beech frame by Stouby, w. 200 cm \*SFP

**Est £600 - £800**

7 A 1960/70's armchair, the rattan high-back over an upholstered seat with an afromesian teak wrap-around frame, on circular tapering legs, loosely in the style of Lawrence Peabody \*SFP

**Est £150 - £200**

8 A 1960/70's armchair, the rattan high-back over an upholstered seat with an afromesian teak wrap-around frame, on circular tapering legs, loosely in the style of Lawrence Peabody \*SFP

**Est £300 - £400**





- 9 A 1950/60's machinist's stool with an adjustable seat  
**Est £50 - £80**

- 11 Per Lutken (Danish, 1916-1988) for Holmegaard, a pair of 'Canada' decanters, a 'Roskilde' jug, five 'Princess' water goblets and two 'Princess' wine glasses (10)  
**Est £50 - £80**

- 13 A group of 1950/60's Whitefriars glass swans including one overlaid in black, a light blue, two shades of green and four red examples (8)  
**Est £40 - £60**

- 10 Simon Fussell for Interstore, a Series R, a chromed desk lamp together with a floor lamp by the same designer (2)  
**Est £200 - £300**

- 12 A group of Whitefriars glass including a tangerine 'Bark' design bud vase, a 'Knobbly' vase, a three-sided vase etc. (7)  
**Est £50 - £80**

- 14 Ronald Stennett Wilson (1915-2009) for Wuidart & Co, a group of three 1950's dimple vases in grey and amber, the largest labelled (3)  
**Est £30 - £50**



- 15 A pair of 1970's French desk lamps by Verrerie de Vianne, max. h. 26 cm  
**Est £50 - £80**



- 16 Timo Sarpaneva (Finnish, 1926-2006), a pair of 'Arkipelago' tealight holders or candlesticks, together with an 'Arktia' holder (3)  
**Est £40 - £60**

- 20 A cobalt blue glass vase of large proportions in the manner of Arthur Percy for Gullaskruf or Aseda, h. 97 cm  
**Est £100 - £200**

- 16 A group of five Swedish glass vases by Gullaskraf, Aseda etc. (5)  
**Est £30 - £50**

- 19 Rudolf Jurnikl (Czech, 1928-2010) for Sklo Union, a cuboid vase of typical form, h. 20 cm, together with a 1950's Rudolf Schroter Rosice Sklo vase and two further pieces of Czech glass (4)  
**Est £30 - £50**



- 17 Attributed to Michael Bang for Holmegaard, a 1970's 'Regnbue' (Rainbow) green cased-glass vase, h. 17 cm  
**Est £30 - £50**

21



21

Florence Knoll (American, 1917-2019) for Knoll Studio, a 'Relax' two-seater sofa upholstered in tan leather on a polished chromed frame, signed to the leg, w. 163 cm, d. 88 cm \*SFP

**Est £400 - £600**

22

Antonio Citterio (Italian, b. 1950) for B&B Italia, a pair of 'Simplice' side tables with circular mirrored surfaces on polished chrome frames, labelled, di. 35 cm, h. 47 cm

**Est £300 - £400**

23

Charles Eames (American, 1907-1978) & Ray Eames (American, 1912-1988) for Vitra, a 'Time Life' or 'Lobby' chair upholstered in red button leather on a polished chrome four-star base, Model EA 105, labelled and dated 2006 \*SFP

**Est £800 - £1200**



24

Charles Eames (American, 1907-1978) & Ray Eames (American, 1912-1988) for Vitra, a 'Time Life' or 'Lobby' chair upholstered in red button leather on a polished chrome four-star base, Model EA 105, labelled and dated 2006 \*SFP

**Est £800 - £1200**

25

Charles Eames (American, 1907-1978) & Ray Eames (American, 1912-1988) for Vitra, a set of thirteen 'Eames Plastic Chair' DSW side chairs with grey shells, labelled and dated 2016 (13)

**Est £600 - £800**

26



26

Charles Eames (American, 1907-1978) & Ray Eames (American, 1912-1988) for Vitra, an EA 108 Aluminium Group elbow chair with grey hopsack fabric upholstery, labelled and dated 2007

**Est £200 - £300**





27

27 Antonio Citterio (Italian, b. 1950) for Vitra, an 'Area' daybed or bench sofa, labelled and dated 2006 \*SFP

**Est £300 - £400**

29 After Charles Eames (American, 1907-1978) & Ray Eames (American, 1912-1988), a 'Soft Pad' or 'Softpad' office armchair with black leather upholstery on a five-star swivel base, manufactured by ICF \*SFP

**Est £300 - £400**

32 A Parker Knoll grey button upholstered armchair with a beech frame, stamped maker's marks \*SFP

**Est £60 - £80**



29

30 After Charles Eames (American, 1907-1978) & Ray Eames (American, 1912-1988), a 'Soft Pad' or 'Softpad' office armchair with black leather upholstery on a five-star swivel base, manufactured by ICF \*SFP

**Est £300 - £400**

33 Luke Pearson & Tom Lloyd for Walter Knoll, a set of five 'Turtle' chairs with white shells and grey leather seats, on four-star bases \*SFP

**Est £200 - £300**

28 Arne Jacobsen (Danish, 1902-1971) for Republic of Fritz Hansen, a pair of 'Oxford' highback swivel armchairs upholstered in cream leather on four-star bases, labelled and dated 2007 \*SFP

**Est £300 - £400**

31 Fred Scott (1942-2001) for Hille, a 'Supporto' task chair with grey fabric upholstery on a five-star swivel base, together with a 'Tulip' style bistro table base (2) \*SFP

**Est £100 - £200**

34 Carl Jacobs (Danish, 1924-1993) for Kandya Ltd., a set of four 1950's C3 'Jason' chairs with painted ply shells and tubular metal legs, maker's labels to bases

**Est £150 - £200**

35 After Eero Saarinen (American, 1910-1961), a 'Tulip' style armchair with a white moulded shell and blue fabric seat \*SFP

**Est £50 - £80**

39 After Piet Mondrian (Dutch, 1872-1944), 'Collection of European Masters- Rhythmus', exhibition poster published for Nordrhein Westfalen Museum of Achenbach, from an edition of 1,000, 90 x 70 cm

**Est £60 - £95**

36 After René Magritte (Belgian, 1898-1967), 'La Grande Famille', lithograph printed by ADAGP in 2012, 100 x 70 cm, together with 'Les Valeurs Personnelles' and 'Golconde' (3)

**Est £45 - £60**

40 'Jasper Johns Paintings and Drawings', 'Leo Castelli 420 West Broadway, New York, February 16 - March 9, 1991', 100 x 67 cm

**Est £30 - £45**

41 A Danish Model 2212 two-seater sofa upholstered in Italian tan leather, designed by Borge Mogensen (Borge Mogensen, 1914-1972), 144 x 85 x 75 cm \*SFP

**Est £500 - £700**

37 After Edvard Munch (Norwegian, 1863-1944), 'The Scream', Modern Masters Collection poster, published by Icon, 80 x 60 cm, together with 'Guernica' off-set lithograph after Pablo Picasso (2)

**Est £20 - £40**



38 After Piet Mondrian (Dutch, 1872-1944), 'Composition with Red, Blue, Black, Yellow and Grey', off-set lithograph printed in 2019, 70 x 70 cm

**Est £60 - £95**

42 A set of four Italian stools with tan leather seats and backs on chromed tubular supports, attributed to Arrben  
**Est £100 - £150**



43 A 1960's Italian Franco Albini 'Lobster Pot' bamboo stool  
**Est £60 - £100**

44 A 1960's Italian Franco Albini bamboo child's rocking horse  
**Est £150 - £200**



45 Niels Koefoed for Koefoeds Hornslet, a set of six teak 'Eva' dining chairs including two carvers, together with a teak and crossbanded extending dining table with two fitted leaves, 148-244 x 104 cm \*SFP  
**Est £300 - £500**

46 After Charles Kiffer-Porte (French, 1902-1992), 'Maggy Sarragne', Lithographie Originale - Reproduction Interdite', image 67 x 56 cm  
**Est £200 - £300**

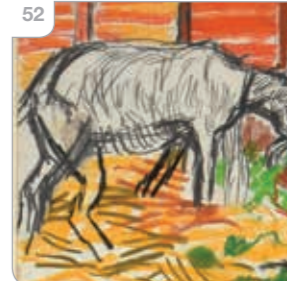


47 Gilbert Proesch and George Passmore (Gilbert & George), 'Blood Heads', signed poster, image 84 x 58 cm  
**Est £80 - £120**

50 Gilbert Proesch and George Passmore (Gilbert & George), 'Sleepy, signed poster, image 84 x 58 cm  
**Est £80 - £120**

52 John Randall Bratby RA (1928-1992), 'Billy, Saucepan and Rock', signed and inscribed, pastel, image 38 x 56 cm \*Purchased from The Phoenix Gallery, Lavenham in 1991  
**Est £250 - £350**

48 Gilbert Proesch and George Passmore (Gilbert & George), 'Naked', signed poster, image 59 x 84 cm  
**Est £80 - £120**



49 Gilbert Proesch and George Passmore (Gilbert & George), 'We are all Angry', signed poster, image 84 x 58 cm  
**Est £80 - £120**

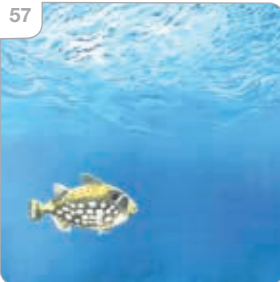
51 After Pablo Picasso (Spanish, 1881-1973), '27.1.54.XIV', from the suite 'La Comedie Humaine', lithograph printed by Mourlot Freres in 1954, image 23 x 32 cm \*Purchased from Goldmark Gallery in 2012  
**Est £100 - £150**

53 Tom Butler (contemporary), 'Bobbing Boats, Polperro', signed and numbered 106/195, hand embellished limited edition, image 40 x 40 cm, certification verso

Est £150 - £200

55 After Marc Chagall (Russian/French, 1887-1985), A group of BBC transparencies including: 'Le Temps N'A Point De Rives', 'Soldier Drinks', 'Gendarme' etc. (85), together with a group of associated stills

Est £80 - £120



54 Tom Butler (contemporary), 'Wish You Were Here', signed and numbered 126/195, hand embellished limited edition, image 40 x 40 cm, certification verso

Est £150 - £200

56 David Barber (contemporary), A triptych study of Hades, signed, oil on canvas, central panel 122 x 91 cm, side panels 120 x 50 cm each (3)

Est £100 - £150

57 David Barber (contemporary), A pufferfish in the sea, signed and dated '15, oil on canvas, 50 x 81 cm

Est £60 - £80



58 David Barber (contemporary), A group of seven small fantasy/wildlife scenes, oils on canvas (7)

Est £30 - £50

60 A French glass decanted with pewter mounts by Etains du Manoir, h. 23 cm

Est £20 - £30

62 An Andreas Glass 'jellyfish' handblown tealight/candle holder, h. 26 cm, together with two matching glass oil lamps (3)

Est £30 - £50

59 Wilfred Lang (Chinese/Dutch, b. 1954), A stylised city scape with skyscrapers, signed, oil on canvas, 99 x 99 cm

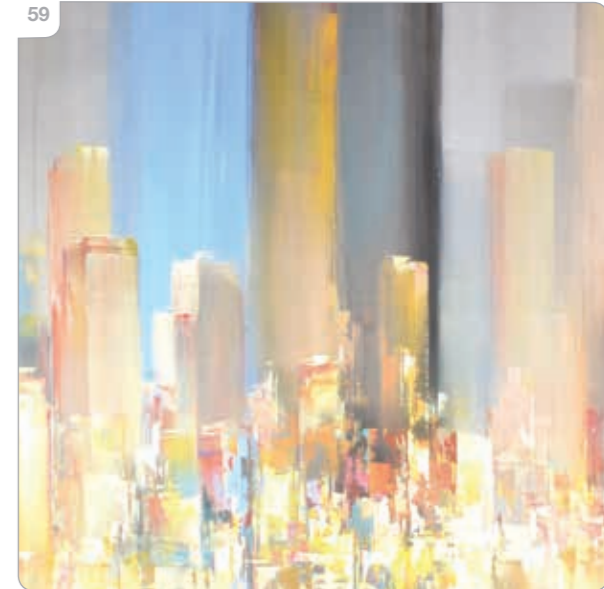
Est £250 - £300

61 Attributed to Wszewlod Sarnecki for Kosno Glassworks, a 1970/80's green smoked-glass bottle vase / jug with clear handle, h. 33 cm

Est £30 - £50

63 A Swedish moulded glass hors d'oeuvres dish by Pukeberg, di. 40 cm

Est £30 - £50



64 A 1960/70's smoked glass vase of teardrop form, h. 20 cm, together with six similar drinking vessels and two further vases (9)

Est £60 - £80

65 A group of glass including an Empoli 'Genie' bottle, a Langham Glass vase, a cased-glass tankard, handkerchief vase etc. (8)

Est £50 - £80



**66** Bertil Vallien (Swedish, b. 1938) for Kosta Boda, a cased-glass 'Cirrus' collection vase, the blue body in the controlled bubble 'pulled peacock feather' pattern, inscribed to the base and numbered Y7534, h. 15 cm, di. 15 cm

**Est £60 - £100**

**68** In the manner of Kay Bojesen/Hans Bolling, an articulated teak and woolen animal

**Est £20 - £30**



**68**

**67** A group of contemporary art glass vases (8)

**Est £80 - £120**

**69** A brown-patinated bronze sculpture on a marble plinth, unsigned, in the manner of John Behan (Irish, b. 1938), h. 29 cm

**Est £100 - £150**



**70**

**70** Duggie Fields (1945-2021), 'Liberty', artist's proof, numbered 3/VIII, image 79 x 54 cm

**Est £60 - £80**

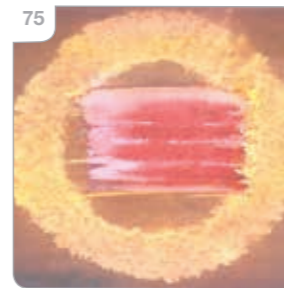
**71** A group of screenprints by Donald Wilkinson, Brad Faine, Martin Taylor etc., various subject matters (7)

**Est £50 - £80**



**72** After Roberto Matta (1911-2002), folio of lithographs for Alexandre Iolas, eleven lithographs, cover page and back page, contained in a folder, numbered 71, dated 1975, unsigned

**Est £200 - £300**



**75**

**73** Rodolfo Dordoni for Flos, a 'Ray F2' floor lamp with dimmer switch, the chrome-plated steel tube structure supporting a glossy glass shade, labelled

**Est £250 - £300**

**75** Martin Battye (contemporary, Norfolk), Abstract shapes on an autumnal ground, lithograph, signed and dated '03, image 33 x 43 cm, together with another in the same series (2)

**Est £40 - £60**

**74** Martin Battye (contemporary, Norfolk), Abstract shapes on a green ground, lithograph, signed and dated '03, image 43 x 34 cm, together with another in the same series (2)

**Est £40 - £60**



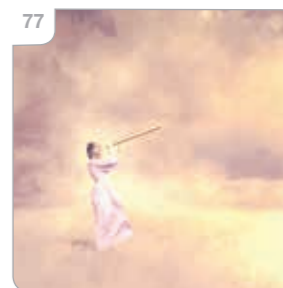
**74**

**76** Martin Battye (contemporary, Norfolk), Geese in flight, lithograph, signed and dated '03, image 22 x 26 cm together with four abstracts by the same hand (5)

**Est £100 - £120**

**77** Julie Corcoran (b. 1978), 'Searching', Digigraphie by Epson, numbered 1/5, signature verso, image 45 x 45 cm

**Est £40 - £50**



**77**



78

Alice Valdez (c.1939-2024), 'Mystery Lady', Native American Female, signed, batik, image 24 x 19 cm

Est £50 - £70

78



80

Lene Bladbjerg (Danish, b. 1974), A bird seated on a branch, orange ground, signed, dated and numbered 57/100, image 26 x 36 cm

Est £40 - £60

81

Bruno Brunetti (Italian, 1920-1966), a Brutalist painted ceramic and leather mounted vase or 'bottle flask', signed 'B. Brunetti' to the leather base, h. 30 cm \*A similar bottle manufactured by La Cava, the company founded in 1956 by Brunetti along with Alberto Caverni and Mario Nuti, was featured in an exhibition by Simone Begani in 2020.

Est £600 - £800

79

Attributed to Paul Lucien Maze (Anglo-French, 1887-1979), Horses and jockeys on a race course, signed, watercolour, image 12 x 22 cm, together with a watercolour and gouache in a similar manner (2) \*Please note that Artist's Resale Rights may apply on this lot.

Est £300 - £400

79



82

Attributed to Bruno Capacci (Italian, 1906-1996), a 1960's glazed stoneware bowl on five raised feet, the turquoise bowl decorated with a seated cat, the base signed 'Raymor Italy R. 122', 25 x 30 x 9 cm \*Raymor were a large American importer in, amongst other things, Italian ceramics and glass during the 1940's-1980's.

Est £200 - £300

83

Attributed to Bruno Capacci (Italian, 1906-1996), a 1960's glazed stoneware bowl of oval form, the crazed grey bowl decorated with an elephant and roundel, the base signed 'Raymore R. 119 SA Italy', 24 x 20 x 9 cm \*Raymor were a large American importer in, amongst other things, Italian ceramics and glass during the 1940's-1980's.

Est £200 - £300

84

Dante Baldelli (Italian, 1904-1953), a spear-type dish, the red and white ground decorated with a classical urn or ewer, printed marks 'Baldelli Italy 37/59' to the base, 36 x 27 cm \*Baldelli was director of the Rometti ceramic workshops from 1928-1954.

Est £150 - £200

85

Gerhard Liebenthron (German, 1925-2005), a Brutalist pot of vase of gourd form with three staggered necks, incised signature 'GL 77' to the base, h. 14 cm, di. 14 cm

Est £100 - £150

86

Ugo Zaccagnini (Italian, 1868-1947), a turquoise glazed ceramic pot and cover of ridged form, mounted with concentric circles and a matching handle, ink marks to base 'Italy UZ38 3/2', di. 16 cm, h. 9 cm

Est £80 - £120



87 Alvino Bagni (Italian, 1919-2009), a 'Sea Garden' lighter, h. 20 cm, together with a Bitossi cigarette cup and match holder (3)

Est £30 - £50

88 A group of contemporary ceramics including a Rosemarie Barr pottery jug modelled as a bird, a gourd-shaped vase signed 'Lotz' and two plaques modelled as nude figures (4)

Est £30 - £50

90 A set of three Rosenthal glove moulds or shop displays moulded as right hands, mounted on a bracket, together with two AHG hands (5)

Est £150 - £200

91 A cased-glass table centre in pink, in the French art glass manner, w. 55 cm

Est £40 - £60



89 An Italian Ceramiche Artistiche Solimene (C.A.S.), Vietri, mug with a grey lava glaze and blue crosses, ink maker's marks to the base, h. 11.5 cm

Est £20 - £30

92 A Tigo-ware 'Florence' vase designed by Tibor Reich (Hungarian-British, 1916-1996) and inspired by his wife, manufacture attributed to Denby, modelled as a figure with clasped hands, no maker's marks, h. 38 cm

Est £600 - £800

93 In the manner of Tito Agnoli for Bonacina, a pair of bamboo armchairs together with a matching table (3)

Est £80 - £120



94 After Charles Eames (American, 1907-1978) & Ray Eames (American, 1912-1988), a pair of 670-style lounge chairs with rosewood shells, black button upholstery and five-star bases (2) \*SFP \*CITES Article 10 Transaction Specific Ref: 25GBA10WT6QUK

Est £200 - £300



94 Kurt Ostervig (Danish, 1912-1986) for Jason Mobler, a rosewood lamp table with a single frieze drawer on square straight legs, 70 x 44 x 53 cm \*CITES Article 10 Transaction Specific Ref: 25GBA101PO12N

95 In the manner of Jean Gillon (Brazilian, 1919-2007) for Probel, a 1970's slatted side table, 58 x 61 x 40 cm

Est £50 - £80

96 A German three-spot standard lamp with a chromed straight shaft, matching base and orange shade, by Staff Leuchten

Est £200 - £300



98 A German three-spot standard lamp with a chromed straight shaft, black base and orange shade, by Staff Leuchten  
**Est £200 - £300**



99 Inma Bermúdez and Francis Cayouette for Ikea, a set of ten 'Vasteron' orange wirework stools  
**Est £200 - £300**

100 An Ercol Windsor drop-leaf dining table in elm and beech, Model 384, di. 113 cm  
**Est £60 - £100**

102 Dante Baldelli (Italian, 1904-1953) for Ceramiche Baldelli in Città di Castello, a dish or plate of kidney form, the cream ground decorated with black lines in a Mondrian style, workshop printed marks to the base including '24/720-MAG', 26.5 x 19 cm \*Baldelli was director of the Rometti ceramic workshops from 1928-1954.  
**Est £150 - £200**

103 Günther Stüdemann (German, 1890-1981) for I.C.S. (Industria Ceramica Salernitana), a glazed stoneware dish decorated with fish swimming in the sea, a yellow band to the rim, maker's fish mark and SG initials to the base, di. 23 cm, h. 4.5 cm  
**Est £200 - £300**

101 A stoneware sculpture modelled as a horse with a mottled green bubble glaze, indistinct pottery marks to the base, h. 26 cm, w. 28 cm  
**Est £80 - £120**



104 A 1920's Italian, Vietri, glazed stoneware bowl in the manner of Günther Stüdemann, Richard Dölker and Guido Gambone, the black ground decorated with three goats, within green and grey bands, unsigned, di. 28 cm, h. 6 cm  
**Est £80 - £120**

106 A Bitossi bowl or dish modelled as a fish with incised geometric decoration, ink marks '764/5 Italy' to the base, 20 x 20 x 5 cm  
**Est £30 - £50**

108 Aldo Londi (Italian, 1911-2003) for Bitossi, a 1950's stoneware sake set of figural form, the decanter numbered '95/368 Italy', h. 33 cm, together with a pair of matching cups (3)  
**Est £120 - £150**

107 Aldo Londi (Italian, 1911-2003) for Bitossi, a 1950's vase and dish decorated with green leaves on a black ground, vase h. 19 cm, dish w. 25 cm (2)  
**Est £50 - £80**

109 A Ceramica Pinto, Vietri, a glazed stoneware candleholder modelled as a donkey, signed 'Italy 26', h. 14 cm, together with a Vietri pen holder modelled as two donkeys over a trough, signed 'Italy 363' (2)  
**Est £20 - £30**

105 A 1950/60's Italian footed bowl by Bitossi for Goodfriend (US Importer) decorated with horizontal coloured and gold bands, a variation of the 'Thailand' or 'Thailandia' decor, numbered '95/940 Italy' to the base with a label for 'Hogan-Evers Flowers, Oakland', di. 15.5 cm, h. 12 cm \*This design is attributed to Aldo Londi (1911-2003) or Ettore Sottsass (1917-2007).  
**Est £400 - £600**



- 110** A pair of figural glazed stoneware bookends by I.C.S. (Industria Ceramica Salernitana) in the manner of Elsie Dölker, modelled as seated musicians within red and blue diagonal bands, maker's fish mark to the base along with 'I.C.S. Italy', h. 14 cm (2)

**Est £150 - £200**



- 111** After Salvador Dali (Spanish, 1904-1989), Man with His Head Full of Clouds (Hombre con la cabeza llena de nubes), Fundacio Juan March exhibition poster, 2013, image 83 x 59 cm

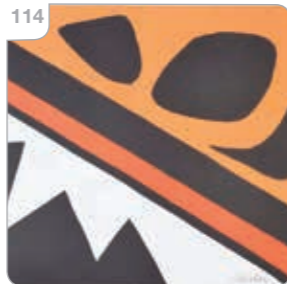
**Est £45 - £60**

- 112** After Keith Haring (American, 1958-1990) and Andy Warhol (American, 1923-1997), Poster for the 20th Montreux Jazz Festival, screenprint in colours on smooth wove paper, printed by Albin Uldry, 85 x 60 cm

**Est £30 - £45**

- 114** After Alexander Calder (American, 1898-1976), off-set lithograph poster for Pace/Columbus Exhibition 1971, 64 x 82 cm, together with a poster after Wassily Kandinsky 'Collection of European Masters - Komposition' (2)

**Est £40 - £55**



- 113** After Mark Rothko (American, 1903-1970), 'Collection of American Masters - O.T. (Yellow, Blue on Orange)', Carnegie Museum of Art, printed in 1997, 100 x 70 cm

**Est £30 - £45**

- 115** After Roy Lichtenstein (1923-1997), 'Reflections on Crash', circa 2013, offset lithograph poster for National Gallery of Australia, 59 x 73 cm, together with 'Girl and Spray Can' (2)

**Est £60 - £95**



- 116** After Sir Howard Hodgkin (1923-2017), 'The Sky's the Limit', serigraph, edition of 500, published by The Lincoln Center on heavy wove paper, 76 x 83 cm, two copies (2)

**Est £30 - £45**

- 119** A 1990's 'Paloma' lamp by Habitat with a tulip-style base and later shade

**Est £50 - £80**

- 117** A 1950's Ruscha Milano Keramik cabinet serving plate, di. 22 cm, together with five matching side plates, di. 18 cm (6)

**Est £80 - £120**

- 118** Carl Ojerstam (Danish) for Ikea, a 1980's 'Jonisk Design' table lamp

**Est £50 - £80**

- 120** A group of five 'Aquarius' Fish Series plates by Washington Pottery together with a 'Flower Power' plate (6)

**Est £40 - £60**

- 121** Bjorn Winblad (Danish, 1918-2006) for Rosenthal, a 'La Traviata' cabinet plate together with a Studio Line vase and a star-shaped dish (3)

**Est £30 - £50**

- 122** An Italian pottery table lamp base decorated with a horse and rider by Marcello Fantoni (1915-2011), signed, h. 28 cm excl. fitting

**Est £100 - £150**



**123** A group of Italian pottery carriages, bicycle and musical mice (6)

**Est £30 - £50**

**124** A group of Italian ceramics including Fratelli, figures of musicians, a gondola, miniature vases etc. (Qty)

**Est £30 - £50**

**125** An art glass vase with yellow spirals and millefiori decoration, in the manner of Licio Zanetti, h. 23 cm

**Est £30 - £50**

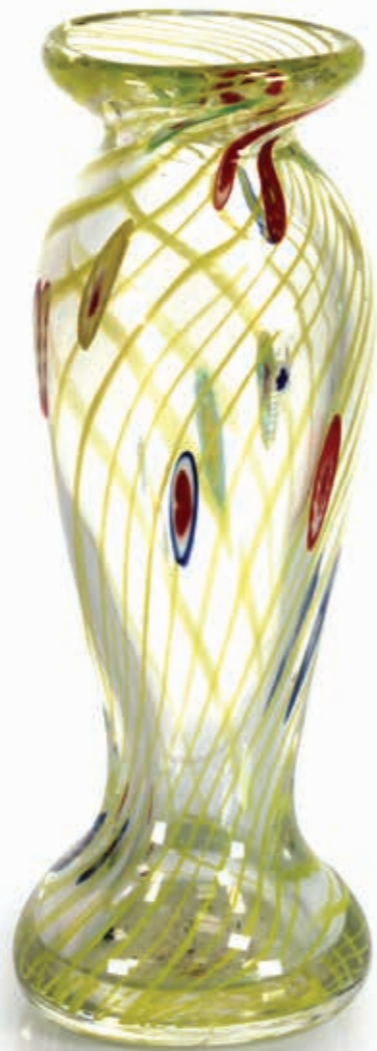
**126** Attributed to Sanyu Glass Factory Ltd., a blue cased-glass vase of organic form, h. 24 cm

**Est £20 - £30**



**127** A group of contemporary art glass including a heart carafe, a waterfall bowl, a Murano-style bird, a lustre-glazed vase etc. together with a German glass fishing float (9)

**Est £80 - £120**



**128** Workshop of Sergio Bustamante (Mexican, b. 1942), a group of three polychrome penguins bursting from an egg, signed 'Macias', h. 29 cm, together with three zebras in an egg, signed 'R Miranda Mex', h. 32 cm, and a pig in an egg, signed 'Macias', h. 13 cm (3)

**Est £500 - £700**



**129** A 1980's Reducta, London blanc-de-chine modernist sculpture of a head, sticker to the base, h. 34 cm

**Est £60 - £80**

**130** A Soviet metalwares candelabrum modelled as a Viking longboat or drakkar, w. 29 cm, together with a tealight holder (2)

**Est £40 - £60**



**131** A 1960/70's Lotus Pottery bull by Elizabeth Skipworth, h. 19 cm, w. 33 cm

**Est £40 - £60**

**132** A studio pottery two-section candle/tealight holder

**Est £40 - £60**

**133** A Peill & Putzler 'Ice' lamp together with a chromed disc and opaque glass table lamp and two further desk lights (4)  
**Est £120 - £150**



**134** Anders Pehrson (Swedish, 1912-1982) for Atelje Lyktan, a 1970's Swedish moulded brown desk lamp of tubular form  
**Est £100 - £150**

**135** In the manner of Harvey Guzzini, a 1970's table lamp with a smoked brown shade on chromed base, h. 54 cm  
**Est £50 - £80**

**136** A 1970's Dutch globe pendant light by RAAK with a smoked exterior and aluminium central shaft  
**Est £50 - £80**



**137** An Art Deco style lamp, the globular glass shade supported by a silvered female figure, h. 70 cm, together with a smaller Art Deco style lamp (2)  
**Est £60 - £80**

**138** 21st Century, 'Shimmering Blue', signed verso and dated 2003, oil on canvas, 153 x 61 cm  
**Est £10 - £20**

**139** A pair of Modernist enamel wall art panels, 113 x 21 cm each (2)  
**Est £60 - £80**

**140** A pair of 1970's Sykes and Hirsch loudspeakers designed by David Sykes, di. 40 cm (2)  
**Est £80 - £120**

**141** A 1970's Kerst Koopman limited edition 'Close Encounter' lamp  
**Est £200 - £300**

**142** Attributed to Vico Magistretti (Italian, 1920-2006), a pair of 'Carimate' dining chairs  
**Est £40 - £60**

**143** Ola Wihlborg (Swedish) for Ikea, a pair of 'Stockholm' table lamps, h. 33 cm  
**Est £70 - £100**

**144** Carl Jacobs (Danish, 1924-1993) for Kandya, a Model C3 'Jason' chair overpainted in white  
**Est £50 - £80**



**145** A Heals of Loughborough side table, the laminate surface over two drawers on circular tapering legs joined by stretchers, 48 x 36 x 51 cm  
**Est £80 - £120**



**146** An Arkana 'Tulip' shaped footstool with a green fabric upholstered seat \*SFP

**Est £30 - £50**

**147** Philip Arctander (Danish, 1916-1994) for Paustian, a 'Clam' armchair in yellow button upholstery on oak legs, manufactured in 2022 and retailed by Skandium \*SFP

**Est £600 - £1000**

**148** A 1970's teak hall stand, the vinyl clad front with three hooks, mirror, table and umbrella/stick stand, the side opening to reveal further hooks to the interior, 59 x 50 x 182 cm

**Est £100 - £150**

**149** John & Sylvia Reid for Stag, a teak sideboard with two doors, four graduated drawers and a fitted interior, on hairpin legs, 138 x 46 x 70 cm

**Est £400 - £600**



**150** John & Sylvia Reid for Stag, a teak sideboard or cabinet with two doors and a fitted interior, on hairpin legs, 92 x 46 x 70 cm

**Est £400 - £600**

**151** John Piper (1903-1992), Northern Cathedral, circa 1962, screen printed cotton satin for Sandersons, image 43 x 56 cm

**Est £60 - £80**

**152** Pilar Cereto (Spanish, living in Ireland), 'The Fern Weaver', acrylics on board, signed and dated '24, image 61 x 46 cm

**Est £60 - £80**



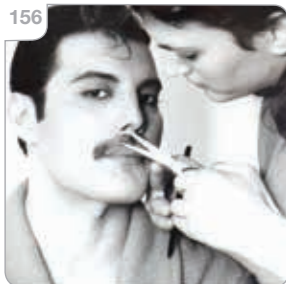
**153** Eskil Nordell (Swedish, 1921-2001), Two boys on a yellow ground, signed and dated '54, oil on board, image 47 x 37 cm

**Est £30 - £50**



154 Fritiof Strandberg (Swedish, 1906-1988), A landscape, signed and dated 1948, oil on board, image 32 x 40 cm

Est £30 - £50



158 Richard Blunt (contemporary), 'Body and Soul', signed front and verso, Washington Green label verso, oil on canvas, image 75 x 59 cm \*See <https://www.richardblunt.co.uk/>

Est £200 - £300

155 Michael Ochs Archives/Getty Images, 'Actress Marilyn Monroe takes the subway in Grand Central Station', limited edition 5/300 silver gelatin archival fibre print, image 27 x 35 cm, with certification

Est £50 - £80

157 Getty Images Cassius Clay/Mohammed Ali, silver gelatin archival fibre print, image 40 x 40 cm

Est £50 - £80



159 After Bjorn Wiinblad (Danish, 1918-2006), '1001 Nat Fischers Forlag' (Arabian Nights), lithographic poster, image 100 x 49 cm

Est £60 - £80

156 Steve Wood/Express/Getty Images, 'Grooming Freddie' 1982, silver gelatin archival fibre print, image 27 x 35 cm, with certification

Est £50 - £80



160 A green-patinated bronze sculpture modelled as 'The Mirrored Man', on a marble plinth, attributed to Marco Raveli, pupil of Lorenzo Quinn (Italian, b. 1966), h. 121 cm

Est £1500 - £2000

161 A set of ten Shelley Art Deco cups and saucers together with a further saucer, each decorated in a salmon colourway, numbered 412021

Est £40 - £50

162 Robert Heal for Staples of Cricklewood, a teak modular 'Ladderax' shelving system including eight black metal uprights (200 x 36 cm), four black metal uprights (200 x 20 cm), two teak uprights (200 x 36 cm), two white metal uprights (110 x 20 cm), one teak cabinet lacking doors (90 x 48 x 37 cm), five shelves (105 x 20 cm), ten shelves (90 x 20 cm), ten shelves (90 x 35 cm), one writing slope (90 x 41 cm) and forty-four cross member

Est £300 - £400

163 A Danish oak modular shelving system designed by Henning Kjærnulf including four uprights, a fall-front bureau, two two-door cabinets and six various shelves, w. 90 cm

Est £300 - £400



164 A set of six Danish oak ladder-back dining chairs designed by Henning Kjærnulf \*SFP

Est £300 - £500



165 A Danish oak drawer-leaf dining table designed by Henning Kjærnulf, 140 x 85 cm

Est £150 - £200

166 A Greaves & Thomas walnut and crossbanded extending dining table, with one folding leaf fitted below, on square straight legs, with decorative frieze, 183-229 x 91 cm

Est £200 - £300

167 Richard Schultz (American, 1926-2021) for Knoll, a 1960's executive desk, the walnut body with chrome trim and square straight legs, the two pedestals with slides and drawers, 168 x 81 x 74 cm \*Reputedly from Chase Manhattan Bank.

Est £1000 - £1500



169 A 1960's Danish oak and crossbanded desk with an arrangement of four drawers and one cupboard, on triangular tapering legs, 140 x 70 cm

Est £200 - £300



168 A 1960's oak veneered bentwood armchair on matching legs

Est £80 - £120



170 Kato for Andersen Furniture, a set of four bentwood chairs on matching circular tapering legs

Est £40 - £60



173 John Makepeace (b. 1939), a glass-topped pine coffee table, originally retailed by Heals, 63 x 63 x 34 cm

Est £80 - £120



174 Ole Wanscher (Danish, 1903-1985) for France & Sons, a teak three-seater sofa with loose turquoise upholstered cushions, badge to the frame \*SFP

Est £300 - £500

171 A Model E1027 chrome and glass side table designed by Eileen Gray (1878-1976), di. 50 cm

Est £100 - £150

172 Arne Jacobsen (Danish, 1902-1971) for Republic of Fritz Hansen, a 'Super Circular' cafe table, the white surface on a circular shaft and four-star base, labelled, di. 90 cm

Est £100 - £150



175 Aage Christiansen (Danish, b. 1927) for Eran, a 1960's brown leather highback armchair with stitched detail, on a swivel base \*SFP

Est £200 - £300

176 After Andy Warhol (American, 1928-1987), 'Marilyn Monroe' (cerise), off-set lithographic poster, Edition of 2,000 published by te Neues Publishing Company, 65 x 65 cm

**Est £60 - £80**

177 After Andy Warhol (American, 1928-1987), 'Marilyn Monroe' (black), off-set lithographic poster, Edition of 2,000 published by te Neues Publishing Company, 65 x 65 cm

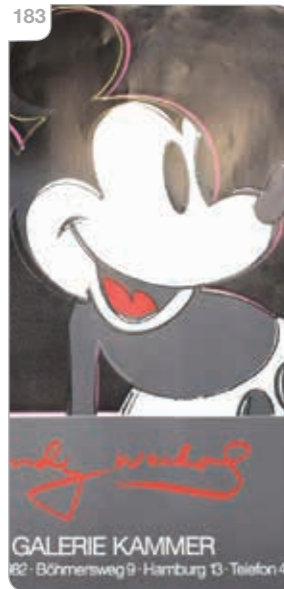
**Est £60 - £80**

178 After Andy Warhol (American, 1928-1987), 'Marilyn Monroe' (orange, shot on white background), off-set lithographic poster, Edition of 2,000 published by te Neues Publishing Company, 65 x 65 cm

**Est £60 - £80**

179 After Keith Haring (American, 1958-1990), Poster (Green) for 1983 Montreux Jazz Festival, lithograph printed on 170 gsm smooth art paper, 85 x 60 cm

**Est £80 - £120**



180 After Keith Haring (American, 1958-1990), Poster (Pink) for 1983 Montreux Jazz Festival, lithograph printed on 170 gsm smooth art paper, 85 x 60 cm

**Est £80 - £120**

181 After Keith Haring (American, 1958-1990), Poster (Yellow) for 1983 Montreux Jazz Festival, lithograph printed on 170 gsm smooth art paper, 85 x 60 cm

**Est £80 - £120**

183 After Andy Warhol (American, 1928-1987), 'Mickey Mouse', off-set lithograph exhibition poster, 'Galerie Kammer, Februar-Marz 1982 Bohmersweg 9, Hamburg 13 Telefon 459427', 85 x 60 cm

**Est £40 - £60**

184 After Francis Bacon (1909-1992), 'Figure in a Room', published by Malborough Gallery, printed on heavy stock paper, 101 x 66 cm

**Est £40 - £60**

185 After Henri Matisse (French, 1869-1954), 'Composition fond bleu 1951', printed in Italy 1996, image 88 x 56 cm

**Est £30 - £50**



187 Ivor Abrahams (1935-2015), 'Gardens Suite', signed, dated '74, artist's proof, image 50 x 55 cm, together with three others in the same suite and a similar print by the same artist (5)

**Est £60 - £100**

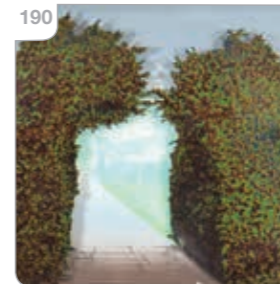
188 Ivor Abrahams (1935-2015), Classical steps, signed, dated '76 and numbered 1/6, artist's proof, image 25 x 20 cm

**Est £20 - £30**



190 Ivor Abrahams (1935-2015), 'Garden Series', signed, 3D collage and print within a perspex case, circa 1970, artist's proof, 59 x 76 x 5 cm

**Est £60 - £100**



191 Patrick Procktor (1936-2006), 'Pie-Jaw', circa 1970, signed and numbered 43/60, image 43 x 62 cm

**Est £50 - £70**

186 A group of twenty-three 1967 and 1968 'Intro' magazines including Nos. 1-4 (23)

**Est £200 - £300**

189 Ivor Abrahams (1935-2015), 'The Seasons I', signed, dated '90, screenprint in colours on wove, artist's proof, image 95 x 116 cm

**Est £50 - £80**

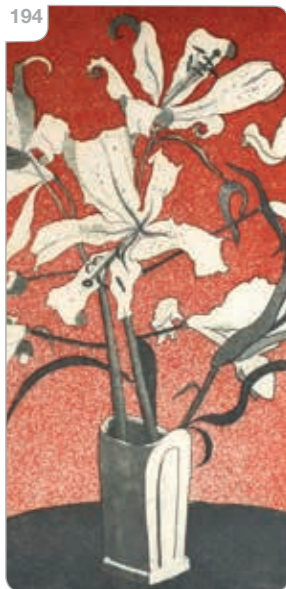


192 Patrick Procktor (1936-2006), 'Nocturne in North Wales', circa 1972, signed and numbered 102/150, image 35 x 47 cm

Est £150 - £200

193 Patrick Procktor (1936-2006), 'Favourites Courtyard', circa 1972, signed and numbered 149/245, image 45 x 60 cm

Est £140 - £160

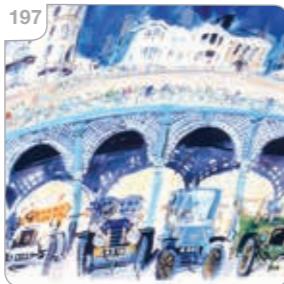


194 Patrick Procktor (1936-2006), 'Lilies', signed and numbered 16/75, image 27 x 19 cm, with certification from Christies Contemporary Art

Est £100 - £150

197 Ian Weatherhead (b. 1932), 'Classic cars below a bridge', signed and numbered 2/300, lithograph, image 32 x 41 cm

Est £30 - £50



195 Donald Wilkinson 'Flowers against a stormy sky', signed and numbered 40/150, etching and aquatint, image 38 x 39 cm, with Christies Contemporary Art certification

Est £20 - £30

196 Donald Wilkinson 'Summer Window', signed and numbered 62/150, etching and aquatint, image 49 x 39 cm

Est £20 - £30

198 John H... (contemporary), 'Sweet Pea', signed and numbered 43/50, etching and aquatint, image 27 x 20 cm, together with two larger etchings by the same hand (3)

Est £50 - £80



199 Bruce McLean (Scottish, b. 1944), 'Head and Ladder', signed, dated 1984 and numbered 26/33, image 78 x 66 cm, together with 'Standing Figures', 41/100, 'Pipe Dream', 24/30, and 'Pipe of Peace (Yellow)', 22/25 (4)

Est £300 - £500

200 Huw Gareth Jones (Welsh, b. 1959) 'Watching Waves Break', oil on sixteen panels, mounted as one, signed and inscribed verso, total 66 x 78 cm

Est £500 - £800



**201** John Gilbey Bowles (b. 1929), 'Daphne', a half-length portrait of a lady wearing a yellow dress, signed, oil on board, 61 x 50 cm  
**Est £60 - £80**

**202** Waistel Cooper (1921-2003), a studio pottery lamp base of squat form with an open neck, signed, h. 12 cm  
**Est £150 - £200**



**202** 20th Century School, Still life with flowers and bowl, unsigned, oil on board, image 59 x 73 cm  
**Est £30 - £40**



**203** David Marshall (Scottish, b. 1942), a 1970/80's brown-patinated bronze bowl, sculptor's mark to the side, di. 10.5 cm  
**Est £150 - £200**

**204** After Tugomir Huberger (Yugoslavian, 1931-2001), 'Still Life with Mandolin', lithograph, image 33 x 97 cm  
**Est £30 - £40**

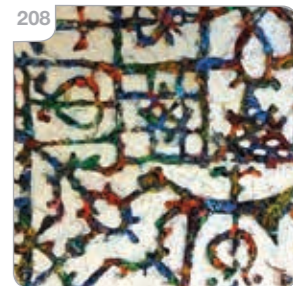
**205** 20th Century School, Still life with flowers and bowl, unsigned, oil on board, image 59 x 73 cm  
**Est £30 - £40**

**206** A Hollywood Regency style brass and gilded adjustable standard lamp on a stepped base  
**Est £30 - £50**



**207** Michael Brennand-Wood (b. 1952) 'Inside Information', signed verso and dated July 1998, mixed media panel with textiles, circular di. 115 cm  
**Est £400 - £600**

**208** Michael Brennand-Wood (b. 1952) 'Cut the Rug', signed verso and dated 1994, mixed media panel with textiles, 32 x 32 cm  
**Est £100 - £200**



**208** Michael Brennand-Wood (b. 1952) 'Cut the Rug', signed verso and dated 1994, mixed media panel with textiles, 32 x 32 cm  
**Est £100 - £200**



**209** A 1970's Danish rosewood and crossbanded extending dining table by Gudme Mobler, with two fitted leaves, maker's stamps to the base, 212 x 105 cm \*CITES Article 10 Transaction Specific Ref: 25GBA10JW0A12  
**Est £200 - £300**

210 Niels Otto Moller (Danish, 1920-1982) for J.L. Moller, a set of eight rosewood Model 78 dining and 62 carver chairs, maker's stamps to frames (6+2) \*CITES Article 10 Transaction Specific Ref: 25GBA10MK1QLR

Est £2000 - £3000



211



211 Tamara Aladin (Finnish, 1932-2019) for Riihimaen Lasi Oy, a pair of 1970's cylindrical glass vases in blue and green with shaped necks, h. 22 cm (2)

Est £60 - £80

212 Tamara Aladin (Finnish, 1932-2019) for Riihimaen Lasi Oy, a pair of 1970's torso-shaped glass vases in sage green, h. 22 cm (2)

Est £60 - £80

213 Tamara Aladin (Finnish, 1932-2019) for Riihimaen Lasi Oy, a 1970's grey glass vase together with another similar grey vase (2)

Est £50 - £80



214 Tamara Aladin (Finnish, 1932-2019) for Riihimaen Lasi Oy, a group of three hooped glass vases in sage green, blue and green, h. 20 cm (3)

Est £80 - £120

215 Tamara Aladin (Finnish, 1932-2019) for Riihimaen Lasi Oy, a pair of 196/70's 1375 vases in green, marks to the base, h. 22 cm, together with a tall vase in the same colourway (3)

Est £80 - £120

216 Tamara Aladin (Finnish, 1932-2019) for Riihimaen Lasi Oy, a 1970's ruby red glass 'Tulppaani' (tulip) vase, h. 20 cm, together with another red vase (2)

Est £50 - £80

217 Tamara Aladin (Finnish, 1932-2019) for Riihimaen Lasi Oy, a group of three 1970's 1376 glass vases in blue, sage and grey, h. 25 cm (3)

Est £80 - £120

218 Tamara Aladin (Finnish, 1932-2019) for Riihimaen Lasi Oy, a 1970's 'Tornado' style vase with hooped centre in green, together with another in yellow, h. 20 cm (2)

Est £50 - £70

219 Tamara Aladin (Finnish, 1932-2019) for Riihimaen Lasi Oy, a 1970's 'Piippu' chimney red glass vase, h. 18 cm, together with a green example (2)

Est £40 - £60

222



222

Tamara Aladin (Finnish, 1932-2019) for Riihimaen Lasi Oy, a 1970's 1379 glass vase in green, h. 15 cm, together with three others in pink and blue (4)

**Est £80 - £120**

221



225

Tamara Aladin (Finnish, 1932-2019) for Riihimaen Lasi Oy, a 1970's 1378 glass vase in green, h. 21 cm, together with two different vases in green (3)

**Est £80 - £120**

226

Tamara Aladin (Finnish, 1932-2019) for Riihimaen Lasi Oy, a 1970's green glass hooped vase, h. 20 cm, together with an amber 'Pompadour' vase (2)

**Est £40 - £60**

220

Tamara Aladin (Finnish, 1932-2019) for Riihimaen Lasi Oy, a 1970's 1473 vase in sage green, h. 18 cm, together with a 'Tulppaani' (tulip) vase in the same colourway (2)

**Est £50 - £80**

223

Tamara Aladin (Finnish, 1932-2019) for Riihimaen Lasi Oy, a 1970's 1379 glass vase in green, h. 20 cm, together with another in pink (2)

**Est £50 - £70**

221

Tamara Aladin (Finnish, 1932-2019) for Riihimaen Lasi Oy, a 1970's 'Torpedo' vase in blue, h. 25 cm, together with grey, yellow and pink examples and a smaller example, h. 15 cm (5)

**Est £100 - £150**

224

Tamara Aladin (Finnish, 1932-2019) for Riihimaen Lasi Oy, a 1970's 1379 glass vase in red, h. 29 cm, together with two in green, h. 25 cm (3)

**Est £100 - £150**

228

Aimo Okkolin (Finnish, 1917-1982) for Riihimaen Lasi Oy, a 'Strowboli' 1436 vase in amber, h. 14 cm, together with another in pink and four further Riihimaki vases (6)

**Est £100 - £150**

229

A G-Plan 'New Seasons' light ash extending dining table, di. 58 cm, with a single fitted leaf, w. 46 cm, together with four matching chairs \*SFP

**Est £60 - £100**

231

A 1950's tilt and height adjustable optician's mirror on a black tole shaft and three-star base, mirror 53 x 35 cm

**Est £100 - £200**

233

Finn Ostergaard (Danish, b. 1946) for Kvist Mobler, an 'Albert' lounge chair with woven seat, upholstered head rest and bentwood frame \*SFP

**Est £100 - £200**

230

An Art Deco style cream-painted sculpture modelled as a swan, h. 74 cm

**Est £50 - £80**

232

A vintage Oland Fatoj cantilever lounge chair with a wicker seat and bentwood frame

**Est £50 - £100**

234

A vintage wicker work pod chair together with a matching footstool \*SFP

**Est £80 - £120**



235



235 A 1960's French bamboo dressing table with a circular mirror over tabletop, w. 92 cm, h. 117 cm

**Est £100 - £200**

237 Henning Kjaernuld (Danish) for Vejle Mobelfabrik, a teak and crossbanded rectangular coffee table on chamfered legs, maker's stamps to the base, 134 x 60 x 46 cm

**Est £80 - £120**

240 A set of four French 1970's beech framed dining chairs by Baumann with chequered backrests and seats \*SFP

**Est £100 - £200**

236

236 A set of four 1960's afromosia/teak rail-back dining chairs with green fabric upholstered seats \*SFP

**Est £100 - £200**

238

238 A set of six dining chairs in the Bauhaus manner, the off-white metal tubular frames with blue/grey upholstered seats and back rests \*SFP

**Est £100 - £200**

238



241

241 A set of four German Brutalist dining chairs in solid oak

**Est £100 - £200**

242

242 A 1960's Danish teak coffee table on turned afromosia legs, Danish Furniture Control badge to the underside, 98 x 47 x 45 cm

**Est £80 - £120**

243

243 Peter Hvidt (Danish, 1916-1986) and Orla Mølgaard-Nielsen (Danish, 1907-1993), an 'AX Series' tigerwood coffee table, circa 1950, 110 x 48 x 56 cm

**Est £300 - £500**

244

244 Johannes Andersen (Danish, 1903-1997), a 1960's teak sewing table with a drop-leaf, maple fitted drawer and rattan basket, on circular tapering legs, 63 x 46 x 52 cm

**Est £100 - £200**

245



245

245 A set of six 1960/70's teak and afromosia bar-back dining chairs with drop-in seats \*SFP

**Est £200 - £300**

246

246 A 1960/70's teak/afromosia coffee with a glass inset surface, 81 x 81 x 40 cm, together with a teak occasional/side table (2)

**Est £100 - £200**





## Mid-Century Design Soft Furnishings Policy

The Furniture and Furnishings (Fire) (Safety) Regulations 1988 (as amended in 1989 and 1993) state that all soft furnishings holding foam must conform to BS 5852 standards. This means that any post-1988 furniture will need to bear a fire label for auction purposes.

The following exceptions apply:

- Items constructed pre-1950. [Regulation 4(a)]
- Items being sold to someone who is in the business of reupholstering furniture. [See Regulation 4(b) and Consumer Protection Act 1987, s.46(7)]
- Items being sold to someone who is in the business of dealing in furniture. [Regulation 14(1)]
- Items being sold that will not be used in a domestic setting in the UK; e.g. for export, for use in a museum or theatre, as a work of art. [Regulation 3(1a) and 4(c)]

The Mid-Century period has been recognised as an area of increased interest to collectors for many years now. The relevant soft furnishings in our sales have been carefully selected to be collector's pieces which are purchased for their design qualities.

Soft furnishings in this sale are being sold as collector's items and are NOT intended for private use in the UK. They may not be in compliance with the Furniture & Furnishings (Fire) (Safety) Regulations 1988 and should be re-upholstered to conform to BS 5852 prior to any use in a domestic dwelling.

Bids are only accepted on the agreement that the furnishings will not be used in a domestic dwelling in the UK.

This policy is in-line with all major UK auctioneers and the Mid-Century trade.

**247** A Danish beech framed and button upholstered highback/wingback rocking chair \*SFP

**Est £50 - £100**

**248** A 1960's beech tea trolley containing two fitted/folding occasional tables over a second tier, on castors, 64 x 44 x 70 cm

**Est £50 - £100**

**249** A 1970's Italian chrome, brass and glass side table by Renato Zevi, 60 x 60 x 51 cm

**Est £80 - £120**

**250** A set of four Danish teak and papercord dining chairs by Glyngøre Stolefabrik, together with a similar pair of Danish chairs with Control badges (6)

**Est £100 - £200**

**251** William Wilson and Harry Dyer for Whitefriars, a group of four 'Knobbly' glass vases in ruby red and kingfisher blue, various sizes (4)

**Est £60 - £80**

**252** William Wilson and Harry Dyer for Whitefriars, a group of three 'Knobbly' glass vases in ruby red and kingfisher blue, h. 24 cm (3)

**Est £40 - £60**



**253** William Wilson for Whitefriars, a 'Molar' vase in blue, h. 15 cm, together with another in ruby red (2)

**Est £40 - £60**

**254** Barnaby Powell for Whitefriars, a smoked grey 'Lotus' bowl, di. 27 cm

**Est £20 - £30**

**255** Geoffrey Baxter (1922-1955) for Whitefriars, a pair of 'Aztec' vases in ruby red and kingfisher blue, h. 18 cm, together with a 'Greek Key' vase and a 'Bark' candle holder (4)

**Est £80 - £120**

**256** A group of Whitefriars glass including an amber open bowl, a Thomas Webb pink vase, a 'Lobed' vase in ruby red etc. (7)

**Est £80 - £120**



**257** A group of three Whitefriars smoked and cased-glass 'Swung' type vases in brown and grey, max. h. 16 cm (3)  
**Est £60 - £80**

**258** A group of Whitefriars 'Controlled Bubble' glass including amber, ruby and sage bowls, a 'Molar' shaped bowl, sage green vase etc. (13)  
**Est £80 - £120**

**259** Per Lutken (Danish, 1916-1988) for Holmegaard, a 1961 'Greenland' Torpedo vase, h. 16 cm, together with a 'Palet' Range vase by Michael Bang (2)  
**Est £30 - £50**

**260** Per Lutken (Danish, 1916-1988) for Holmegaard, a 'Carnaby' carafe, h. 21 cm  
**Est £20 - £30**

**261** Per Lutken (Danish, 1916-1988) for Holmegaard, a 'Selandia' smoked glass bowl together with a glass ice bucket and tongs and a further Holmegaard ice bucket (3)  
**Est £70 - £100**



**262** Per Lutken (Danish, 1916-1988) for Holmegaard, a 1952 emerald green vase together with two Lutken dishes (3)  
**Est £30 - £50**

**263** A group of European and American glass including an iittala glass candlestick, a pair of Krosno vases, a blue cased-glass vase, a Kosta Boda ashtray etc. (7)  
**Est £60 - £100**

**264** Frantisek Vizner (Czech, 1936-2011), a pair of Bohemian glass 'Maze' vases, circa 1965, h. 25cm  
**Est £30 - £50**

**265** Frantisek Vizner (Czech, 1936-2011) for Sklo Union, a 'Lens' vase, h. 23 cm  
**Est £30 - £50**

**266** Asta Stromberg (1916-2011) for Stromberghyttan, a 1960/70's clear glass open bowl with sticker, h. 11.5 cm, together with a matching smaller vase (2)  
**Est £30 - £50**

**267** Bo Borgstrom (Swedish, b. 1929) for Aseda, a red glass vase, h. 22.5 cm, together with a Kosta Boda 'Pippi' vase (2)  
**Est £30 - £50**

**268** A set of six WV Hoffman 'Morgantown' glass martini glasses together with two Wedgwood glasses and a box of Ravenhead 'Apollo' glasses (Qty)  
**Est £40 - £60**

**269** A group of four 1970's coloured glass water jugs in the manner of Krosno, in blue, green and amber (4)  
**Est £40 - £60**

**270** A group of seven various glass jugs in amber, green and clear (7)  
**Est £40 - £60**

**271** An Empoli Glass 'Optic' bowl, di. 11 cm, together with a baluster vase and a blue glass vase (3)  
**Est £30 - £50**

**272** A Carlo Moretti Satinato glass drinking vessel together with three ruby red vases, two blue vases an amethyst vase and two Elme vases (9)  
**Est £60 - £80**

**273** A group of smoked glass including two water jugs, two vases and a tulip-style vase (5)  
**Est £60 - £80**

**274** A Canadian pottery figure modelled as a hippo, w. 45 cm, h. 19 cm  
**Est £30 - £50**





**275** Geoffrey Baxter (1922-1995) for Whitefriars, a Textured Range 'Cucumber' vase in cinnamon, h. 29 cm  
**Est £150 - £200**



**277** Marina Abramovic for Rosenthal, an 'illy collection 2002' set of six espresso cups and saucers decorated with bathers and beach balls  
**Est £60 - £80**

**278** Charmian Edgerton (b. 1944), 'Waiting', signed, pastel, image 20 x 13 cm, together with 'Interval' and 'Ballet Shadows' (3)  
**Est £100 - £150**

**276** A group of 1970's amber coloured glass dishes, pestle and mortar (4)  
**Est £20 - £30**

**277** Marina Abramovic for Rosenthal, an 'illy collection 2002' set of six espresso cups and saucers decorated with bathers and beach balls  
**Est £60 - £80**

**279** Ian McKeever (b. 1946), 'Sentinel No. 8', signed and dated 2005, gouache and pencil, image 66 x 50 cm  
**Est £400 - £500**

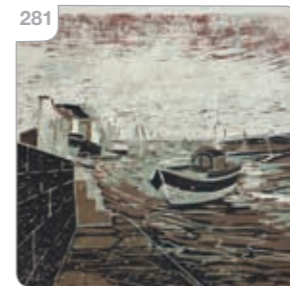


**280** Marianne Westman (Swedish, 1928-2017) for Rorstrand, a set of six 'My Garden' fish-decorated plates, di. 24 cm  
**Est £80 - £120**

**282** A set of five small and one large stainless steel serving mats by Gabis of Sweden (6)  
**Est £20 - £30**

**283** In the manner of Murano, a triple-cased glass table centre of triangular form, w. 37 cm, together with a red-to-orange glass sculpture (2)  
**Est £60 - £100**

**281** June Radford L.R.P.S., 'Ebb Tide, Norfolk', signed, linocut, image 30 x 30 cm  
**Est £40 - £60**



**281** Harry Bertoia (American, 1915-1978), a 'Diamond' chair with hopsack upholstery on a black tubular frame, Knoll Inc. label to the base \*SFP  
**Est £300 - £500**



**285** Ludwig Mies Van Der Rohe (German-American, 1886-1969), a MR20 armchair, the black leather seat and back supported by a chromed cantilever frame, Knoll Inc. label to the base  
**Est £200 - £300**





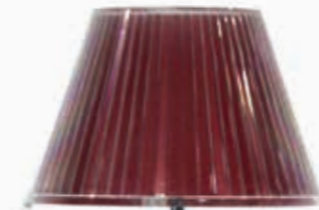
**286** An 'EA 116' Aluminium Group armchair designed by Charles Eames (American, 1907-1978) & Ray Eames (American, 1912-1988), the black leather seat with overpainted arms, on a four-star swivel base, in the manner of Herman Miller but unsigned

**Est £150 - £200**



**287** Charles Eames (American, 1907-1978) & Ray Eames (American, 1912-1988) for Herman Miller, an 'EA 207' 'Soft Pad' or 'Softpad' desk chair, the black leather seat and back with chromed arms, on a four-star swivel base, maker's marks to the base \*SFP

**Est £300 - £500**



**288** Matteo Thun (Italian, b. 1952) for Artemide, a 'Choose' standard/floor lamp with tiltable red diffuser, h. 140 cm

**Est £150 - £200**

**289** Matteo Thun (Italian, b. 1952) for Artemide, a 'Choose' desk lamp with tiltable red diffuser, h. 57 cm

**Est £80 - £120**

**290** Matteo Thun (Italian, b. 1952) for Artemide, a 'Choose' desk lamp with tiltable red diffuser, h. 57 cm

**Est £80 - £120**



**291** A 'Tab' coffee table by Gallotti & Radice, the circular smoked glass surface resting within a chromed frame, di. 90 cm, h. 30 cm

**Est £150 - £200**

**292** A 'Tab' side table by Gallotti & Radice, the circular smoked glass surface resting within a chromed frame, di. 49 cm, h. 46 cm

**Est £100 - £150**



**293** A set of three Danish teak nesting occasional tables designed by Kai Kristiansen (Danish, 1929-2022), max. 59 x 35 cm

**Est £80 - £120**

294 Carl Jacobs (Danish, 1924-1993) for Kandya, a pair of C2 'Jason' chairs with bentwood frames and circular tapering legs

Est £100 - £150



297 A 1960/70's teak single-drawer bedside cabinet on later tapering legs, 50 x 46 x 57 cm

Est £30 - £50

298 A pair of 1970's Danish ceiling lights with copper coloured shades and perspex diffusers

Est £50 - £80

299 A pair of wall/ceiling mounted 'eyeball' lamps with mustard enamelled bodies

Est £30 - £40

295 Maurice Burke for Arkana, a white 'Tulip' side table, the circular surface on a typical pedestal base, di. 45 cm, h. 51 cm

Est £80 - £120



296 A 1970's beech and brown leather upholstered stool \*SFP

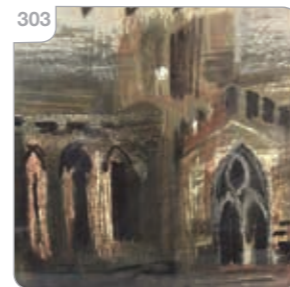
Est £40 - £60

300 Robert Heal for Staples of Cricklewood, a teak modular 'Ladderax' shelving system including a fall-front bureau, a bookcase with glazed sliding doors, a single shelf, two 133 cm uprights, one 111 cm upright and the associated cross-members

Est £300 - £400

301 'Geno Washington Savoy Brown', lithographic poster, circa 1973, image 49 x 75 cm

Est £30 - £50



305 A set of four 1970's pendant lamps with chrome detail modelled as flying saucers (4)

Est £120 - £150

303 John Piper CH (1903-1992), Northern Cathedral, circa 1962, screen printed cotton satin for Sandersons, image 44 x 59 cm

Est £50 - £80

306 Philippe Starck (Italian, b. 1949) for Kartell, a pair of 'Dr Glob' chairs in red and turquoise, maker's marks to the undersides

Est £80 - £120



302 A group of three photographic prints showing Serge Gainsbourg and Marianne Faithfull, image 41 x 29 cm (2) and 29 x 20 cm (1)

Est £30 - £40

304 A large hand-painted wall panel decorated with a South East Asian processional scene, 53 x 281 cm

Est £80 - £120

307 Adam Stegner for Flöttoto, a pair of 1970's stacking bentwood children's chairs, maker's marks to the undersides

Est £50 - £100

**308** Claudio Dondoli & Marco Pocci for Pedrali, an Italian 'Gliss' tub chair on chromed legs, maker's marks to the underside  
**Est £50 - £100**

**309** Johannes Andersen (Danish, 1903-1997) and Illum Wikkelsø (Danish, 1919-1999) for CFC Silkeborg, a set of three teak and crossbanded nesting tables, badge to the underside, max. 65 x 37 x 52 cm  
**Est £100 - £200**

**310** Angel Pazmino (Ecuador, b. 1923), a set of three 'Safari' hardwood lounge chairs with black leather slung seats and back  
**Est £300 - £400**

**311** A marble coffee table with crossed tubular legs, 138 x 70 x 36 cm  
**Est £150 - £200**

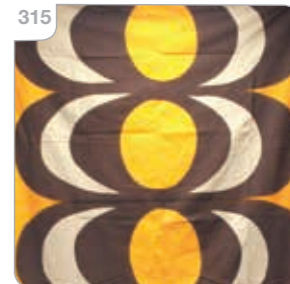


**312** A 1970's Dutch lounge chair reupholstered in black wool mix fabric on triangular metal legs \*SFP  
**Est £150 - £200**



**313** Arne Hovmand Olsen (Danish, 1919-1989) for Mogens Kold, a teak sideboard, the four central drawers flanked by a pair of sliding doors, badge to the underside, 185 x 45 x 73 cm  
**Est £600 - £800**

**314** A Hadrill & Horstmann 'Simplus' counter-balance desk lamp  
**Est £50 - £80**



**315** A pair of Marimekko Kaivo curtains by Maija Isola (Finnish, 1927-2001)  
**Est £50 - £80**

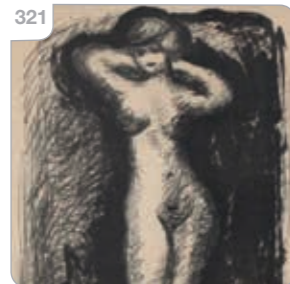
- 316** Hans Jurgen Schobel (Danish) for Sodahl Designs, a wall hanging printed with a vibrant peacock, 109 x 75 cm  
**Est £50 - £80**

- 317** A Scandinavian rya wool rug decorated with elongated shapes on a pink/red and cream ground, 175 x 100 cm  
**Est £60 - £80**

- 318** A Finnish Rana wall hanging with stripes in red, yellow, black and other shades, 140 x 42 cm  
**Est £30 - £50**



- 320** Hellsing, possibly Gustaf Hellsing (1889-1974), A landscape with a red sky, signed and dated '62, oil on canvas, image 22 x 63 cm  
**Est £40 - £60**



- 319** A Scandinavian rya wool rug decorated with reds and blues, 93 x 60 cm, together with another smaller rug (2)  
**Est £40 - £60**

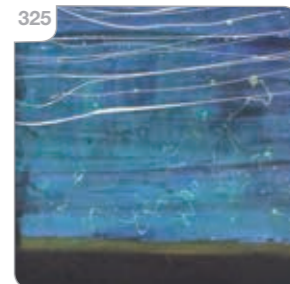
- 321** Tor Bjurström (Swedish, 1888-1966), A nude female, signed and numbered 8/15, lithographic print, image 62 x 45 cm  
**Est £30 - £50**



- 323** Rud Thygesen (Danish, 1932-2019) and Johnny Sorensen (Danish, b. 1944) for Botium, a set of six stacking 'Dark Horse' chairs, labels to undersides  
**Est £300 - £400**



- 324** Andy Spain (contemporary), 'London Bridge', mounted digital archive print, edition of 10, details verso, image 68 x 98 cm  
**Est £40 - £60**



- 322** A 'Glove' chair designed by Sir Terence Conran (1931-2020) with a black leather upholstered seat and white shell on a swivel base \*SFP  
**Est £400 - £600**

- 325** 20th/21st Century School, A watery scene, unsigned, oil on canvas, image 100 x 75 cm  
**Est £30 - £50**

**326** Boo Saville (b. 1980), 'Pink Drawing', coloured biro on paper, dated 2012, image 77 x 56 cm

**Est £300 - £500**

**327** Ben Johnson (b. 1946), 'Tokyo Pool Reflection', signed and dated '09, inkjet print on Aquarelle Arches paper, image 50 x 49 cm

**Est £50 - £70**



**328** Bhatia Varsha (contemporary), 'St Pauls from the Thames', signed, mixed media, image 30 x 57 cm

**Est £40 - £60**

**329** Marianne Fox Ockinga (Dutch, contemporary), 'Arsenal Stadium Construction', signed and dated '05, artist's proof woodcut, image 13 x 35 cm

**Est £40 - £60**

**330** Graham Clarke (b. 1941), 'Wimpole Home Farm', signed and numbered 246/250, coloured etching, image 27 x 34 cm

**Est £50 - £80**



**333** Richard Beer (1928-2017), 'A country house', signed and numbered 64/70, colour etching, image 60 x 47 cm

**Est £80 - £120**

**335** A Keith Smith tile wall hanging entitled 'Celtic Saint coming to Cornwall', limited edition of 100, total 42 x 31 cm

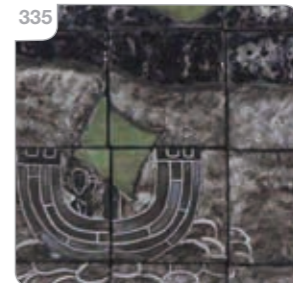
**Est £30 - £40**

**331** Martin Ware (b. 1946), 'Figure Study', signed, dated '85 and numbered 10/100, limited edition etching, image 30 x 32 cm

**Est £20 - £30**

**334** Eric Gill (1882-1940), 'Eve', signed, numbered 79 verso, off-set lithographic print, certification from 'The Erotic Print Society', image 23 x 12 cm

**Est £80 - £120**



**332** Carl Friedrich Oberle (Scene & Costume Designer), Wotan design from WNO's production of Siegfried, signed and numbered 11/84, ink on paper, image 40 x 30 cm

**Est £40 - £60**



**336** A set of four Ercol Model 401 'Butterfly' chairs in elm and beech  
**Est £1000 - £1500**

**337** A set of four Ercol Model 401 'Butterfly' chairs in elm and beech  
**Est £1000 - £1500**

**338** Lucian Ercolini for Ercol, a set of Model 515/516 supper tables in elm and beech, central table di. 54 cm, side tables w. 94 cm (5)  
**Est £800 - £1200**

**339** Charles Eames (American, 1907-1978) & Ray Eames (American, 1912-1988) for Evans Products Co., a pair of early moulded plywood LCW (lounge chair wood) chairs (2)  
**Est £1500 - £2000**



**342** A 1970's Danish armchair with purple button upholstery on a tubular circular swivel base, together with a matching footstool \*SFP  
**Est £200 - £300**

**343** A pair of 1970's Danish tub chairs on four-star swivel bases, recently reupholstered \*SFP  
**Est £60 - £80**

**340** H.W. (Henry Walter) Klein for Bramin, a set of six 1970's Danish teak carvers or elbow chairs with camel leather upholstered seats \*SFP  
**Est £1000 - £1500**

**341** Arne Hovmand-Olsen (Danish, 1918-1989) for Mogens Kold, a pair of 1960's teak framed dining chairs with black upholstered seats, badges to the frames \*SFP  
**Est £80 - £120**





344



- 344** Carl Ojerstam for IKEA, a 'Villstad' chair with tubular frame and turquoise upholstery \*SFP

**Est £80 - £120**

- 347** A 1970's Danish brass enamelled twin-spot standard lamp

**Est £30 - £50**

- 351** Dan Budnik (American, 1933-2020), Civil Rights Movement march, signed, photograph, image 27 x 18 cm, together with another photograph by the same photographer (2)

**Est £60 - £100**

345

- A 1950/60's Danish low open armchair with mustard button upholstery on block feet \*SFP

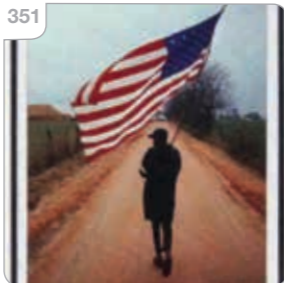
**Est £100 - £150**

348

- A 1970's Danish brass enamelled twin-spot half-height floor lamp

**Est £30 - £50**

351



346

- A 1970's Danish brass enamelled twin-spot standard lamp by Laoni

**Est £30 - £50**

349

- A Danish brass enamelled floor lamp with a single spot and later shade

**Est £20 - £30**

352

- Jenny Matthews (photographer), Emma Thompson dancing with the Cumbene Macuaela Music Group, Action Aid photograph, image 24 x 36 cm, signed by Emma Thompson, together with another Action Aid photograph (2)

**Est £100 - £150**

353

- Bernard Dunstan (1920-2017), A nude female in her bedroom, signed and numbered 53/185, image 35 x 35 cm, together with another by the same hand (2)

**Est £80 - £120**

355



354

- David Jones (1895-1974), 'Wounded Knight - 4th State', drypoint etching, 1981 reprint on japon, portfolio VIII/ed. 75', image 20 x 16 cm

**Est £600 - £800**

355

- David Jones (1895-1974), 'Centenary Edition of Engravings', group of five wood and copper engravings, 1995 edition by Wolseley Fine Arts, each numbered 33/100 (5)

**Est £500 - £700**

356

- David Jones (1895-1974), 'The Resurrection of Christ (from the Book of Jonah)', wood engraving, 1979 reprint on japon, image 10 x 9 cm

**Est £80 - £120**



357 David Jones (1895-1974), 'Naked Girl Supporting Cartouche', wood engraving, 1981 reprint on japon, image 12 x 10 cm

Est £80 - £120

358 David Jones (1895-1974), 'The Lion and the Farmer (Seven Fables of Aesop)', copper engraving, 1981 reprint on japon, image 9 x 10 cm

Est £80 - £120



359 John Piper (1903-1992), 'Northern Cathedral', circa 1962, screen printed cotton satin for Sandersons, 51 x 122 cm, mounted to a frame

Est £100 - £150



360 John Piper (1903-1992), 'Stones of Bath', circa 1962, screen printed cotton satin for Sandersons, 51 x 122 cm, mounted to a frame

Est £100 - £150

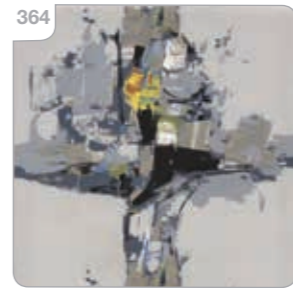
361 John Piper (1903-1992), 'Arundel', circa 1960, screen print on fabric by Saunderson, based on the design for the stained glass windows at Oundle School chapel, image 39 x 49 cm

Est £60 - £80



364 Donald Hamilton Fraser (1929-2009) for David Whitehead Ltd., 'Cyclades' design, screenprinted fabric, circa 1960, 62 x 71 cm, mounted to a frame

Est £60 - £80



365 Bernard Wardle & Co., 'Byzantine Horses', 1960's screenprint on fabric, 108 x 122 cm, mounted to a frame

Est £80 - £120

363 Tibor Reich (1916-1996), a group of three fabric textiles each screen-printed with flowers, 47 x 51 cm each, mounted to frames (3)

Est £60 - £100



366 A Volkswagen VW camper door panel painted in orange with 'Gum Ball 3000', 78 x 120 cm

Est £60 - £80



**367** Attributed to Tom Dixon, a spherical LED pendant light with gold coloured reflective outer shade

**Est £50 - £70**

**368** A 1960/70's white moulded plastic table mirror, h. 46 cm, together with an Art Nouveau style mirrored clock and a further mirror (3)

**Est £60 - £100**



**370** After Piero Fornasetti, an occasional table, the circular surface on three 'hairpin' legs, the base with a printed label 'Cole & Son Fornasetti Collection', di. 30 cm, h. 34 cm

**Est £50 - £70**

**372** A cased-glass bowl, pink-to-clear, d. 19 cm, together with two further art glass bowls (3)

**Est £50 - £70**

**373** A pair of 1960's kitsch wall lights with perspex shades, red highlights and black mounts (2)

**Est £30 - £40**

**369** Attributed to Gaetano Sciolari (Italian, 1927-1994), a five-branch chromed chandelier with hanging droplets, h. 80 cm

**Est £150 - £200**



**371** A 1980/90's occasional table, the white laminate surface on black cylindrical supports joined by stretchers, 60 x 67 x 38 cm

**Est £20 - £30**

**374** Eric Clements for Elkington, a silver-plated four-piece tea service

**Est £20 - £30**

**375** Alan Heaps (later known as Alan Sidney) (b. 1941), a stoneware mechanical fantasy figure, initialled, h. 29 cm, together with a copy of 'Ceramic Review' 1978

**Est £50 - £70**

**376** A Legras cameo glass vase decorated with fruiting vines, h. 23 cm, together with a twin-handled glass vase attributed to Pierre D'Avesn (French, 1901-1990) for Daum (2)

**Est £100 - £150**

**380** Francesco Toselli and Cecilia Marzocchi, a set of twelve Italian 'HERE The Personal Globe' three-dimensional paperboard globes

**Est £40 - £60**

**383** A near pair of curled lucite candlesticks in the manner of Charles Hollis Jones, an arched block triple candle holder, three further Taiwanese graduated candlesticks, a set of five graduated candlesticks and a pair of scroll stands (12)

**Est £100 - £150**

**377** After Pablo Picasso (Spanish, 1881-1973), 'Nain', numbered reproduction print on panel, image 20 x 15 cm

**Est £20 - £30**



**378** A set of Viners 'Mosaic' stainless steel cutlery

**Est £20 - £30**

**381** An Italian lucite tape dispenser by Felice Botta together with a set of stamps by the same maker, a Blitz table lighter and a further desk piece (4)

**Est £40 - £60**



**379** A wall sculpture constructed from a bicycle seat and modelled as a cow and horns

**Est £30 - £40**

**382** An oversized Italian pepper mill by Felice Botta, h. 44 cm

**Est £30 - £50**

**384** A lucite three-tier trolley with chromed banding, on castors, 46 x 42 x 84 cm

**Est £80 - £120**



**385** A pair of lucite occasional tables with central stretchers, 35 x 36 x 45 cm

**Est £40 - £60**

**387** A nest of three lucite occasional tables, max. 40 x 31 x 41 cm, together with a similar low coffee table (4)

**Est £60 - £80**

**389** A set of four Italian 'Leaf' red stacking chairs by Moroso

**Est £50 - £80**

**386** A lucite rowel rail with three bars on a straight shaft and matching base, h. 108 cm

**Est £30 - £50**

**388** A large lucite coffee table, 50 x 119 x 42 cm

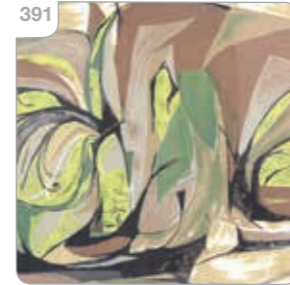
**Est £40 - £60**

**390** A set of three white gooseneck table lamps by Michael Graves (3)

**Est £100 - £150**

**391** Barbara Brown (b. 1932) for Heals, 'Sweetcorn', circa 1958, printed fabric panel, image 39 x 59 cm

**Est £50 - £70**



**392** After David Hockney (b. 1937), 'Boodge', lithographic print for 1995 calendar, image 19 x 25 cm, together with 'Stanley' (2)

**Est £50 - £80**

**393** Gilbert Proesch and George Passmore (Gilbert & George), 'Blood Heads', signed poster, image 84 x 58 cm

**Est £80 - £120**

**394** Attributed to Lucienne Day (1917-2010) for Heals, 'Calypso', circa 1955, screenprinted fabric, 83 x 106 cm, mounted to a frame

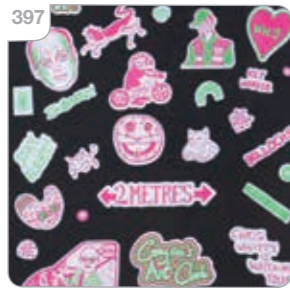
**Est £80 - £120**

**395** Sir Grayson Perry CBE RA Hon FRIBA (b. 1960), 'Sailing Ship', screenprint on canvas, image 50 x 50 cm

**Est £60 - £80**



396 Sir Grayson Perry CBE  
RA Hon FRIBA (b. 1960),  
'Red Alan Manifesto',  
digital print, c. 2014,  
image 29 x 29 cm  
**Est £60 - £100**



397 Sir Grayson Perry CBE  
RA Hon FRIBA (b. 1960),  
Collage of Lockdown  
graffiti stickers, circa  
2020, image 29 x 29 cm  
**Est £40 - £60**

398 Sir Grayson Perry CBE  
RA Hon FRIBA (b. 1960),  
'Sissy Liberty' fabric  
textile, circa 2008, image  
20 x 29 cm  
**Est £50 - £80**

399 Sir Grayson Perry CBE  
RA Hon FRIBA (b. 1960),  
'Playing to the Gallery'  
series, circa 2014, total  
49 x 63 cm  
**Est £60 - £100**

400 A Herbert Terry  
'Anglepoise' lamp,  
Model 90, in mushroom  
grey  
**Est £30 - £50**



401 'Toujours Chic': two slip  
cases containing four  
books each of fashion  
illustrations, together with  
'Les Idees Nouvelles de  
La Mode', No. 1923 (3)  
**Est £100 - £150**

402 Two late 20th century art  
glass bowls/dishes (2)  
**Est £30 - £40**

403 A Swedish green glass  
table lamp base by Kosta  
with sticker and etched  
signature, numbered  
8170, h. 29 cm  
**Est £30 - £50**

404 A 1960's bronzed  
sculpture of a  
gentleman's head,  
initialled TH, on a teak  
block plinth, h. 36 cm  
**Est £30 - £50**

405 'Chrysalis Presents...  
Yes', Sheffield City Hall,  
Hastings Printing Co.,  
76 x 50 cm  
**Est £100 - £150**

406 Arthur Pe for Kolbäck,  
a set of three Swedish  
brass candlesticks,  
max. h. 7.5 cm  
**Est £30 - £50**

407 A group of six 1960/70's  
glass buttons, two with  
Bimini backs attributed  
to Lucie Rie (1902-1995)  
(6)  
**Est £100 - £150**

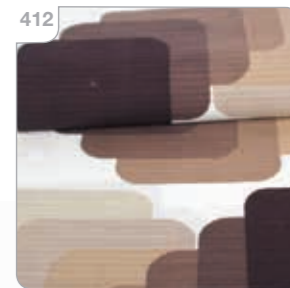


408 Ronald Reyman  
(1928-1998), Abstract  
with vibrant colours,  
signed, dated 1959  
and numbered, twenty  
unframed lithographs in  
the same run (20)  
**Est £50 - £80**

409 Ralph Lundquist  
(Swedish, b. 1931),  
A vibrant abstract figure,  
signed, dated 1960 and  
numbered, thirty-two  
lithographs in the same  
run (32)  
**Est £80 - £120**

410 Olle Zetterquist (Swedish,  
1927-2024), Autumnal  
landscape, signed, dated  
1961 and numbered,  
sixty lithographs in the  
same run (60)  
**Est £100 - £150**

411 Willard Lind (Swedish),  
Interior scene, signed,  
dated 1958 and  
numbered, forty-six  
lithographs in the same  
run (46)  
**Est £100 - £150**



412 A roll of Italian geometric  
fabric in autumnal tones  
designed by Col Nova  
**Est £60 - £100**



**413** A 1970's Danish aluminium twin-spot standard lamp

**Est £30 - £40**

**414** A 1970's Danish twin-spot standard lamp with brown enamelled shades and a brass coloured shaft

**Est £30 - £40**

**415** A 1970's Danish twin-spot standard lamp with coffee coloured shades and a white shaft

**Est £30 - £40**

**416** Jens Ole Christensen for Getama, a 1960's Danish beech dining table on bentwood legs, label to underside, 180 x 90 x 72 cm

**Est £200 - £300**



**417** A 1960's Danish teak and crossbanded desk with four drawers and a cupboard, on tapering legs, 138 x 69 cm

**Est £300 - £400**

**418** A 1960's Danish teak desk with six drawers on tapering legs, 131 x 71 cm

**Est £300 - £400**



**419** W. Skovsbill (Danish), Abstract still life study, signed and dated '60, oil on board, image 50 x 68 cm, together with five others by the same hand (6)

**Est £100 - £150**

**420** Viggo... (Danish), Still life with flowers and candle, signed, oil on canvas, image 60 x 40 cm, together with a smaller still life oil (2)

**Est £50 - £70**

**421** A Pilkington Royal Lancastrian dish, numbered 3369, di. 23 cm, h. 5 cm

**Est £30 - £40**

**422** A set of three 1960/70's Lotus Pottery bulls by Elizabeth Skipworth, max. w. 25 cm, h. 15 cm

**Est £100 - £150**

**423** An Italian vase by Fratelli Fanciullacci, numbered 452, imported by Montebello, h. 12 cm

**Est £20 - £30**

**424** A Hornsea Pottery centre piece, numbered 376, w. 33 cm, together with a Hornsea 836 centre (2)

**Est £30 - £50**



**425** A group of Hornsea 'Summit' and 'Rainbow' decorated ceramics including a twin-handled vase, cruet, planters, egg cups etc. (Qty)

**Est £60 - £80**



**426** A mixed group of ceramics including a pair of Susan Williams-Ellis for Portmerion vases, a Glyn Colledge for Bourne/Denby pin tray, a Danish Boholm wall-mounted candle holder etc. (Qty)

**Est £40 - £60**

**427** A group of Scandinavian glass including a red glass 'Bamboo' vase by Bo Borgstrom (Swedish, b. 1929) for Aseda, a red vase by Per Olof Strom (Swedish, b. 1942), a 'Rocket' lamp by Inge Samuelsson for SEA Glasbruk and a further Glasbruk vase (4)

**Est £80 - £120**



**428** Jacob E. Bang (Danish, 1899-1965) for Holmegaard, a 'Kluk Kluk' green glass decanter, h. 25 cm, together with a blue glass vase by Bang, a decanter by Per Lutken (Danish, 1916-1988) and a 'Morgenbord' egg cup (4)

**Est £80 - £120**

**429** Nils Landberg (Swedish, 1907-1991) for Orrefors, a glass decanter, lacking stopper, numbered 2497-11, h. 19 cm, together with an Orrefors vase, h. 19 cm (2)

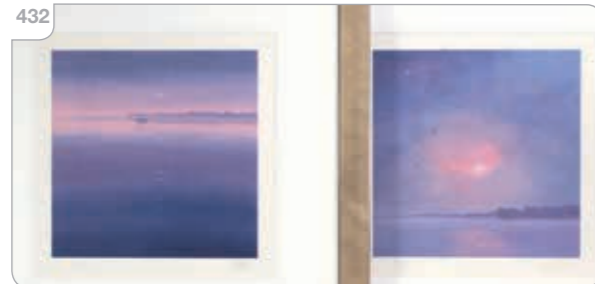
**Est £30 - £50**

**430** Vicke Lindstrand (Swedish, 1904-1983) for Orrefors, a 'Stella Polaris' Series bowl, di. 15 cm, together with a Holmegaard 'Capriole' bowl, a miniature Czech vase by Vladislav Urban and similar glass (6)

**Est £60 - £100**

**431** A group of five glass decanters and vases by Holmegaard, Wedgwood and Frank Thrower for Dartington (5)

**Est £60 - £100**



**432** Lawrence Coulson (b. 1962), 'Dusk Waters', limited edition lithograph, signed and numbered 259/495, image 25 x 25 cm, together with 'Early Rain' (2)

**Est £60 - £80**

**433** A group of nineteen glass chandelier 'droplets' modelled as square flat blocks of ice (19)

**Est £40 - £60**

**434** A 1970's glass lamp base with dimpled body, in the manner of Nanny Still, Riihimaki, h. 36 cm, together with a larger Art Deco style harvest lamp (2)

**Est £60 - £80**



**435** A Poole Pottery 'Spear' dish, 44 x 17 cm, together with an Italian dish decorated with a figure (2)

**Est £40 - £60**

**436** A pair of 1960/70's chromed candlesticks modelled as nude females, h. 19 cm

**Est £40 - £60**

**437** A British bent ply and tubular three-tier desktop organiser by Mallo, maker's labels to the undersides

**Est £50 - £80**



**438** A moulded plastic bottle holder with carry handle and top tier, h. 56 cm

**Est £30 - £50**

439 A 1960's coffee table, the brass finished frame supporting a butterfly wing style surface decorated with figures, 98 x 45 x 43 cm

Est £40 - £60

440 A 1970/80's black wicker chair on a swivel base

Est £100 - £150

441 A contemporary Danish DK3 oak 'Royal System Cabinet' designed by Poul Cadovius, labelled, 80 x 38 x 43 cm

Est £50 - £80



442

442 Robert Heal for Staples of Cricklewood, a teak modular 'Ladderax' shelving system including a chest of three drawers (90 x 42 x 48 cm), two sliding door cabinets (90 x 35 x 47 cm), two sliding door cabinets (59 x 35 x 48 cm), one fall-front bureau (59 x 40 x 41 cm), nine teak uprights (200 x 37 cm), one teak upright (132 x 37 cm), seven shelves (90 x 20 cm), two shelves (90 x 35 cm), nine shelves (60 x 35 cm), one shelf (60 x 20 cm), two writing slopes (60 x 41 cm) and the associated cross-members

Est £500 - £700



443



445 A 1960's orange perspex table lamp with a ringed shaft and stepped base, h. 46 cm (excl. fitting and shade)

Est £80 - £120



446

443 A pair of Ugo Zaccagnini e Figli blanc-de-chine undulating table lamps in the Chinese manner, signed, h. 65 cm (excl. fittings/shades)

Est £200 - £300

444



444 Attributed to Bitossi, an Italian ceramic figure modelled as a stylised bull, w. 32 cm

Est £80 - £120

446 Rita Kearton (contemporary), 'Bridle Lane', signed and numbered 13/20, etching and aquatint, image 37 x 68 cm

Est £40 - £60





447 Rita Kearton (contemporary), 'Oranges & Lemons' artist's proof, etching and aquatint, image 30 x 21 cm, together with 'Three Legged Race' (2)  
**Est £50 - £80**

449 Phil Greenwood (b. 1943), 'Cloudbreak', signed and numbered 35/250, dated '82, etching and aquatint, image 29 x 29 cm  
**Est £50 - £80**

451 George Nelson (American, 1908-1986) for Herman Miller, an 'Action Office' work table, the oak finished surface on metalwork legs, badge to the underside, 182 x 76 cm  
**Est £150 - £200**

448 Madeleine Hand (b. 1959), A lady carrying a basket of apples, signed, watercolour, image 40 x 27 cm  
**Est £150 - £200**

450 Dimitrov (20th Century), 'Northern Lake', signed, dated '79 and numbered 74/120, etching and aquatint, image 40 x 57 cm, together with two other prints by Sally Glanville and Winkelman (3)  
**Est £40 - £60**

452 Florence Knoll (American, 1917-2019) for Knoll Studio, a low occasional table with a smoked glass surface and chromed tubular frame, signed, 60 x 60 x 41 cm  
**Est £150 - £200**

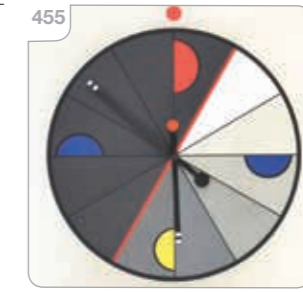


453 A French etagere or set of shelves by Pierre Vandel with four graduated glass shelves on a metalwork frame, badge to the frame, 99 x 39 x 102 cm  
**Est £200 - £300**

456 After Marcel Mouly (French, 1918-2008), Stylised townscape, lithographic print, image 56 x 73 cm  
**Est £30 - £50**

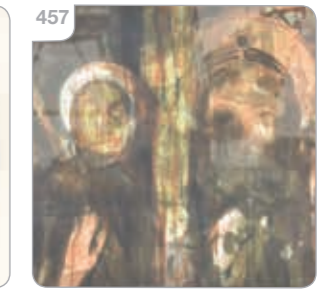
457 Frances Hatch (contemporary), Weeping figures, signed, artists proof, image 55 x 75 cm  
**Est £50 - £80**

454 A 1960's teak standard lamp, the cylindrical and reeded shaft on a circular base supporting a cream shade  
**Est £50 - £80**



458 A 1960/70's Danish teak framed wall mirror, stamped 'Made in Denmark', 70 x 37 cm  
**Est £60 - £80**

455 Kurt Delbanco (German, 1909-1989), a 1980's Memphis style 'Morphos' wall clock, 81 x 81 cm  
**Est £100 - £200**



459 A 1970's dining table, the smoked glass rectangular surface resting on a chromed flat steel frame, 151 x 80 cm  
**Est £60 - £80**

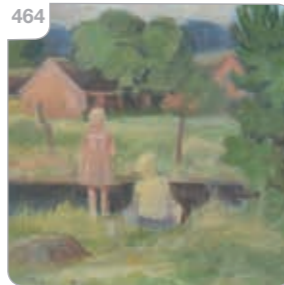
460 Mogens Vantore (Danish, 1895-1977), Still life with fruit and decanter, signed, oil on canvas, image 54 x 54 cm  
**Est £150 - £200**

461 Manner of Oluf Host (Danish, 1884-1966), A winter scene, unsigned, oil on canvas, image 43 x 74 cm  
**Est £100 - £150**



462 1960's Danish School, A stylised landscape, indistinctly signed, oil on canvas, image 34 x 59 cm  
**Est £50 - £80**

463 1960's Danish School, Boats by the harbour, initialled SSC, oil on canvas, image 30 x 38 cm, together with a similar oil of boats (2)  
**Est £40 - £60**



464 Nis Stougaard (Danish, 1906-1987), Children by a stream, signed, oil on canvas, image 53 x 65 cm  
**Est £100 - £150**

465 Flemming (Danish), Boats at sea, indistinctly signed, oil on canvas, image 59 x 78 cm  
**Est £60 - £100**



466 1960's Danish School, Abstract shapes, indistinctly signed H (?), Kjell, oil on board, image 43 x 45 cm  
**Est £60 - £80**

467 A 1970's Danish teak chest of six drawers with turned handles, on later tapering legs, 75 x 41 x 107 cm  
**Est £150 - £200**

468 A 1960's Danish teak highboard with three central drawers and two sliding doors, on tapering legs, 139 x 43 x 118 cm  
**Est £200 - £300**



469 A 1960's Danish coffee table of large proportions, the surface set with eight tiles by Ole Bjorn Kruger within an Indian/Bombay rosewood frame, 130 x 89 x 52 cm  
**Est £200 - £300**



illustrated: lot 460, 468

470 Attributed to Epstein Furniture, a set of eight dining chairs with mahogany frames and later leaf upholstery, including two carvers (6+2) \*SFP

Est £200 - £300

471 A 1960's Danish fully upholstered three seater sofa in the manner of Borge Mogensen (1914-1972) and Hans Wegner (1914-2007), on beech sleigh-type legs, w. 229 cm \*SFP

Est £400 - £600



472 A 1960's Danish 'banana' sofa with pale red button upholstery and leather mounted arms, on teak tapering legs, in the manner of Carl Malmsten (Swedish, 1888-1972), w. 185 cm \*SFP

Est £600 - £800



474 A contemporary Polish oak low coffee table by Ludwig, 140 x 86 cm

Est £100 - £150

473 An oak and tile topped coffee table with aluminium highlights, 140 x 80 cm

Est £100 - £150

475 Don Chadwick and Bill Stumpf for Herman Miller, an 'Aeron' office chair, Size B

Est £150 - £200

476 A 1970's Danish red enamelled ceiling light with opaline glass centre

Est £40 - £60

477 A 1970's Danish aluminium four-tier ceiling light

Est £40 - £60



478 A 1970's Danish black enamelled ceiling light with an opaline glass shaft

Est £30 - £40

479 A 1970's aluminium ceiling light with moulded glass centre

Est £40 - £60

480 Maria Soltau (Danish), Still life, initialled and dated '65, oil on canvas, image 37 x 46 cm, together with an oil landscape by Bent Hansen and a further landscape (3)

Est £80 - £120

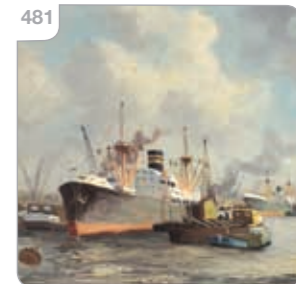
481 Adrianus Verveen (Dutch, 1912-1988), Shipping in a port, signed, oil on canvas, image 60 x 91 cm

Est £80 - £120



482 Kari... (Danish School), Figures in a bedroom, indistinctly signed, dated '85, oils, image 31 x 76 cm

Est £30 - £50



483 Bernhardt Daniel Rolfsted (Danish, b. 1905), A skeleton watching over loggers, signed and dated 2013, oil on canvas, image 97 x 79 cm

Est £40 - £60



484

1940/50's Danish School, Three vases and planters of flowers, indistinctly signed, oil on canvas, image 784 x 92 cm

Est £60 - £80

485 1960's Danish School, A red vase of sunflowers, indistinctly signed, oil on canvas, image 70 x 60 cm, together with another similar oil (2)

Est £80 - £120

486 Josva (Danish School), A wetlands/seascape, signed, oil on canvas, image 53 x 69 cm, together with a stormy seashore oil on board (2)

Est £100 - £150

487 Vibeke Leighton (Danish, contemporary), Abstract shapes, signed and dated '97, mixed media, image 41 x 41 cm, together with two Bjørn Wiinblad screenprints (3)

Est £40 - £60

488 Peder Meinert (Danish, b. 1951), Coloured blocks, signed, dated '85 and numbered 18/49, screenprint, image 44 x 34 cm, together with a similar screenprint by Bamse Kragh-Jacobsen (2)

Est £30 - £50

489 20th Century Danish School, Two children holding hands, a house and adult in the background, indistinctly signed, print, image 45 x 42 cm

Est £20 - £30



490

490 After Asger Jorn (Danish, 1914-1973), A set of eleven lithographic prints, each image 28 x 21 cm

Est £150 - £200

491 A Danish Type 850 desk lamp by H Bødtcher-Hansen (HBH)

Est £20 - £30

492 A pair of 1960's Danish pottery table lamp bases with hessian shades, h. 16 cm (excl. fittings and shades)

Est £30 - £40

493 A pair of Cloudnola 'Tip Top' glass bowls together with three contemporary Modernist candlesticks (5)

Est £40 - £60

494 A boxed Ferm 'Verso' table vase together with an Ikea green enamelled cactus teapot, 'The Conran Shop' vase and a pair of heart-shaped vases (5)

Est £80 - £120

495 A group of contemporary ceramics by Jonathan Adler including four matching mugs, five eye-decorated drinking vessels and a pair of eye dishes (11)

Est £30 - £50



496 William Plunkett (1928-2013), a rare 'Reigate' Range sofa upholstered in salmon pink fabric on a nylon-coated flat steel frame, w. 184 cm \*SFP

Est £800 - £1200

497 Robin Day (1915-2010), a sofa or day bed, designed in 1956, with laminate mahogany ends, upholstered in green velour, on flat steel bar supports, manufacture attributed to Hille, w. 196 cm \*SFP

Est £500 - £800



498 Pacific Design Studio, London, Two ladies drinking cocktails at a bar, unsigned with guild stamp, lithograph, image 40 x 30 cm

Est £40 - £60

500 Carl Jacobs (Danish, 1924-1993) for Kandya Ltd., a set of four 1950's C3 'Jason' chairs with ply shells on white tubular metal legs

Est £200 - £300



502

499 Renato... A girl studying her nails amongst flowers, signed and dated 1965, screenprint, image 78 x 34 cm

Est £30 - £50

501 Hans Olsen (Danish, 1919-1992) for Lea Designs, a 'Balloon' chair, the brown suede seat with teak arms and a black metal tubular frame

Est £300 - £400

502 A contemporary glass bowl by Karel Malivanek, the black ground with orange streaks, signed, w. 30 cm, h. 15 cm

Est £100 - £150

503 Philip Crozier (b. 1947), Abstract shapes in green, brown and grey, signed and numbered 23/30, screenprint, image 45 x 45 cm

Est £50 - £80



506

504 'Richard Long: Walking in Circles', The South Bank Centre 1991 sealed book, together with four booklets of screenprints and a bottle of Beck's Bier decorated with Long's artwork (6)

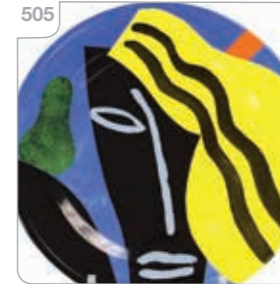
Est £40 - £60

506 'Bruce McLean at The Whitechapel: 27 April - 5 June 1983', lithographic advertising poster, 124 x 88 cm

Est £100 - £150

507 Bruce McLean (b. 1944) and Mel Gooding (b. 1941), 'Dream Work', 1985, including twenty-nine screenprints in colours, published by Knife Edge Press, London, signed, dated and numbered 49/140 by both to a rear page, signed, dated and numbered to the inside of the dust wrapper by McLean, on Arches paper, with dust wrapper and matching slipcase, together with the original publisher's outer packaging

Est £500 - £700



505

505 A limited edition Wedgwood plate commissioned by The National Art Collections Fund & Wedgwood decorated with 'Passed the Tangerine Test' by Bruce McLean (b. 1944), di. 31 cm

Est £100 - £150



508



508

Attributed to Erik Buch, a 1960/70's Danish teak dry bar with laminate counters, the superstructure with a mixing bowl and two drawers, each with unusual chrome handles, over a glazed pair of sliding doors, a foot rail to the front, w. 129 cm, h. 104 cm

**Est £200 - £300**

509

A pair of 1970/80's Danish teak two-door cabinets with unusual handles, on later turned legs, 86 x 50 x 57 cm (2)

**Est £200 - £300**

510

A 1970/80's Danish teak three-drawer chest with unusual handles, on later turned legs, 86 x 50 x 55 cm

**Est £100 - £150**

510



511

A pair of 1970/80's Danish teak bookcases, each with two doors and unusual handles, on later turned legs, 86 x 29 x 90 cm (2)

**Est £200 - £300**

512

A 1970/80's Danish teak open fronted bookcase, on later turned legs, 86 x 29 x 90 cm

**Est £100 - £150**



513

Charles Rennie Mackintosh (Scottish, 1868-1928), a pair of Italian 'Ingram' chairs manufactured by Cassina for their Masters Collection, labelled (2)

**Est £400 - £600**

514

Richard Young for Merrow Associates, a 1960's Model 341C coffee table, di. 91 cm

**Est £80 - £120**

514



515

A Danish teak and crossbanded coffee table by Mobelfabriken Toften, stamped, 77 x 77 x 52 cm

**Est £30 - £40**

516

Bill Stumpf and Don Chadwick for Herman Miller, a 'Mirra' office chair on a five-star swivel base with castors

**Est £60 - £80**

**517** A 1950/60's Danish 'Banana' sofa with red velour upholstery and matching piping, w. 164 cm

**Est £400 - £600**



**518** A 1950/60's Danish 'Banana' sofa in green velour with matching piping, on square block feet, w. 150 cm

**Est £400 - £600**



**519** Arne Jacobsen (Danish, 1902-1971) for Fritz Hansen, a set of six 'Series 7' stacking chairs, circa 1985, labelled

**Est £400 - £600**

**520** Arne Jacobsen (Danish, 1902-1971) for Fritz Hansen, a set of six 'Series 7' stacking chairs, circa 1985, labelled

**Est £400 - £600**

# Retro Video Games & Consoles

TO BE SOLD BY LIVE AUCTION

Saturday 22nd November 2025

Commencing at 10am

We are now inviting entries for this forthcoming specialist sale. If you own anything which you think might be suitable we are happy to give complimentary auction advice.

Please contact auctioneer Harry Shiner on 01234 266 366 or [harry@peacockauction.co.uk](mailto:harry@peacockauction.co.uk)

**SALE ENTRIES NOW INVITED**

Bedford Auction Centre  
Eastcotts Park, Wallis Way, Bedford, MK42 0PE  
01234 266 366 or [info@peacockauction.co.uk](mailto:info@peacockauction.co.uk)

[peacockauction.co.uk](http://peacockauction.co.uk)

# Hammer Prices - Bedford, August 2025 Sale

1	£35	37	£30	74	£110	112	£60	173	£22	225	£50	278	£280
2	£55	38	£45	75	£110	113	£70	174	£170	227	£150	279	£26
3	£190	39	£220	76	£300	114	£150	176	£30	228	£460	280	£26
4	£28	41	£100	77	£240	115	£400	177	£28	231	£18	281	£90
5	£80	42	£260	78	£100	117	£80	179	£10	232	£130	283	£160
6	£110	43	£280	79	£50	118	£80	180	£80	233	£180	284	£14
7	£100	44	£220	80	£130	119	£65	181	£180	234	£110	285	£28
8	£420	45	£35	81	£120	121	£380	182	£200	235	£120	286	£70
9	£70	46	£650	82	£50	122	£300	183	£140	236	£40	287	£30
10	£130	47	£180	83	£20	125	£65	184	£130	237	£200	290	£65
11	£280	48	£600	84	£30	126	£65	185	£45	238	£170	291	£280
12	£110	49	£220	86	£60	128	£55	185	£55	239	£35	292	£420
13	£120	50	£80	87	£150	135	£20	186	£30	243	£95	293	£100
14	£140	51	£1900	88	£120	136	£55	187	£20	244	£95	294	£160
15	£260	52	£380	89	£360	137	£35	188	£20	245	£45	296	£50
16	£260	53	£220	90	£35	142	£150	189	£200	247	£260	297	£160
17	£85	54	£280	91	£60	144	£110	190	£80	252	£95	299	£45
18	£220	55	£260	92	£55	146	£90	191	£50	254	£45	300	£45
19	£110	56	£200	93	£75	148	£70	192	£26	255	£90	301	£100
20	£220	57	£180	94	£60	149	£60	193	£40	256	£150	302	£55
21	£180	58	£120	95	£26	152	£35	194	£24	257	£480	303	£360
22	£130	59	£320	97	£190	153	£50	195	£26	258	£20	304	£10
23	£200	60	£360	98	£360	154	£75	196	£50	259	£20	305	£2400
24	£130	61	£260	99	£650	155	£260	197	£55	260	£50	307	£240
25	£170	62	£260	100	£40	156	£190	202	£28	261	£75	308	£180
26	£190	63	£110	101	£1800	159	£650	206	£140	262	£35	309	£380
27	£280	64	£85	102	£2000	160	£170	207	£190	263	£100	310	£500
28	£550	65	£55	103	£30	161	£30	208	£65	264	£220	311	£100
29	£80	66	£85	104	£110	162	£30	209	£50	265	£100	312	£300
30	£130	67	£190	105	£60	164	£26	210	£65	266	£30		
31	£28	68	£50	106	£70	166	£50	211	£160	267	£130		
32	£700	69	£40	107	£50	167	£40	214	£300	273	£35		
33	£130	70	£20	108	£55	168	£50	215	£750	274	£1200		
34	£2400	71	£50	109	£220	169	£40	218	£380	275	£100		
35	£100	72	£50	110	£130	170	£45	220	£40	276	£550		
36	£500	73	£45	111	£700	171	£160	221	£70	277	£200		

## Next Sale

Bedford Auction Centre  
Friday 20th February 2026  
Commencing at 10am

Visit our website for full details  
[www.peacockauction.co.uk](http://www.peacockauction.co.uk)